

TOWNSHIP OF UPPER YODER
CAMBRIA COUNTY
PENNSYLVANIA

5243

ORDINANCE NO. 235 p. 280

AN ORDINANCE FOR THE ACCEPTANCE, OPENING AND LAYING OUT OF
WHISPERING PINES LANE

BE IT ORDAINED, AND IT IS HEREBY ORDAINED that the Township of
Upper Yoder, Cambria County, Pennsylvania, hereby accepts, opens and lays out
as a public road in said Township the following:

BEGINNING at an iron pin at the point of curvature on the
northerly line of Lot 1, said point being on the
southerly line of S.R. 271 and lies South 74° 39' 47"
West 311.08 feet from the northeast corner of Lot 1 as
shown on the Whispering Pines Subdivision which is
recorded in Plat Book 7, at Page 421; thence by the
westerly line of Lot 1 in a southerly direction along a
curve to the left having a radius of 50.00 feet for an
arc length of 78.54 feet to the beginning of a reverse
curve; thence continuing along Lot 1 in a southerly
direction along said curve to the right having a radius
of 120.00 feet for an arc length of 115.19 feet to the
point of tangency; thence along the westerly line of Lots
1 and 3 South 39° 39' 47" West 100.00 feet to a point of
curvature; thence along Lot 3 in a southeasterly
direction along a curve to the left having a radius of
140.00 feet for an arc length of 195.48 feet to a point
of tangency; thence along Lot 3 South 40° 20' 13" East
38.96 feet to a point of curvature; thence along Lot 3 in
an easterly direction along a curve to the left having a
radius of 50.00 feet for an arc length of 57.96 feet to
the beginning of a reverse curve; thence by Lots 3 and 5
along a curve to the right having a radius of 50.00 feet
for an arc length of 215.04 feet to the point of tangency
at the common corner of Lots 5 and 4; thence along the
easterly line of Lot 4 North 40° 20' 13" West 130.61 feet
to a point of curvature; thence along the easterly line
of Lots 4 and 2 in a northerly direction along a curve to
the right having a radius of 180.00 feet for an arc
length of 251.33 feet to a point of tangency; thence
continuing along the easterly line of Lot 2 North 39° 39'

47" East 100.00 feet to a point of curvature; thence continuing along Lot 2 in a northwesterly direction along a curve to the left having radius of 80.00 feet for an arc length of 76.79 feet to the beginning of a compound curve; thence continuing along Lot 2 in a northwesterly direction along a curve to the left having a radius of 50.00 feet for an arc length of 78.54 feet to the southerly line of S.R. 271; thence along said southerly line North 74° 39' 47" East 140.00 feet to the place of beginning.

A map and profile showing said Whispering Pines Lane as prepared by Hinks & Locher Engineers, Inc. on April 1991, and approved by the Upper Yoder Township Supervisors on November 5, 1992, is attached hereto and made part of this Ordinance.

ORDAINED AND ENACTED this 17th day of March, 1994.

TOWNSHIP OF UPPER YODER

William J. Huston

By

[Signature]

Roy M. Shaffer

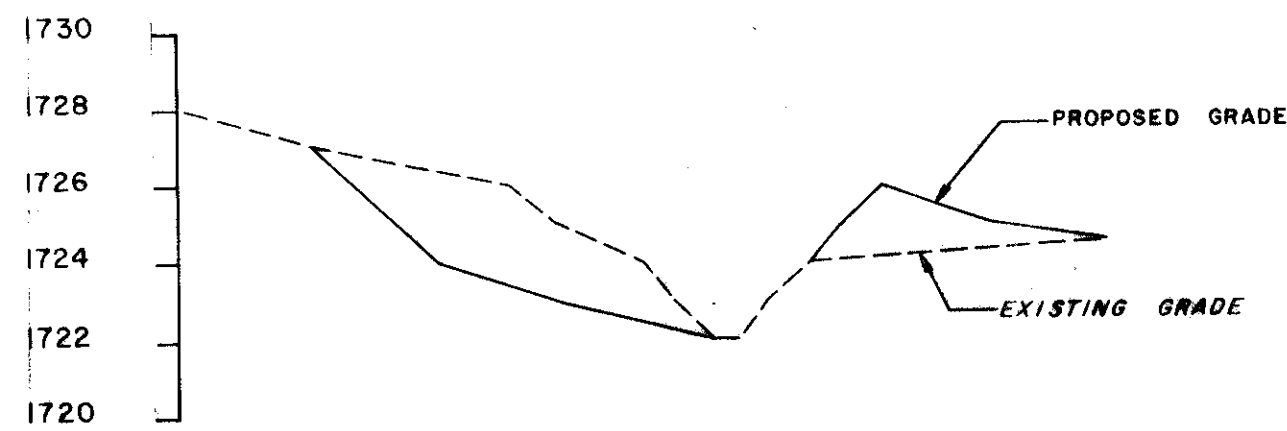
Dean W. Shaffer

Ed Barzeshki BARZESKI

Richard E. Oros

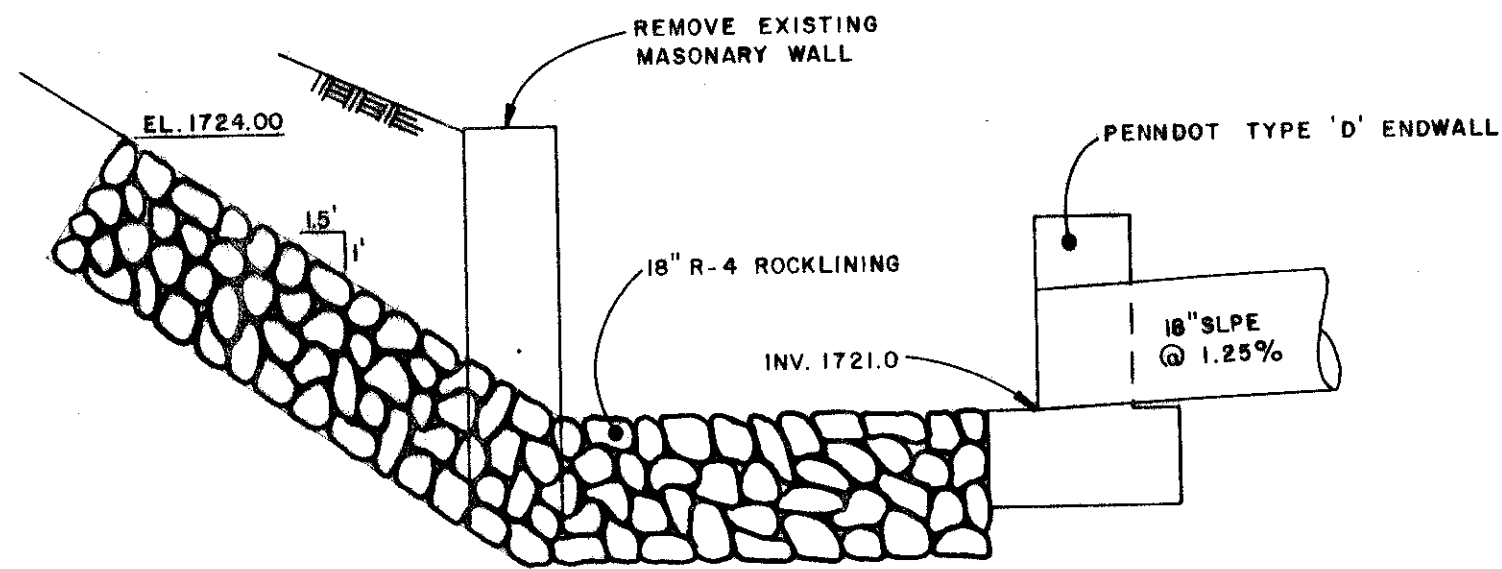
ATTEST:

Mary Kay Maker
Secretary

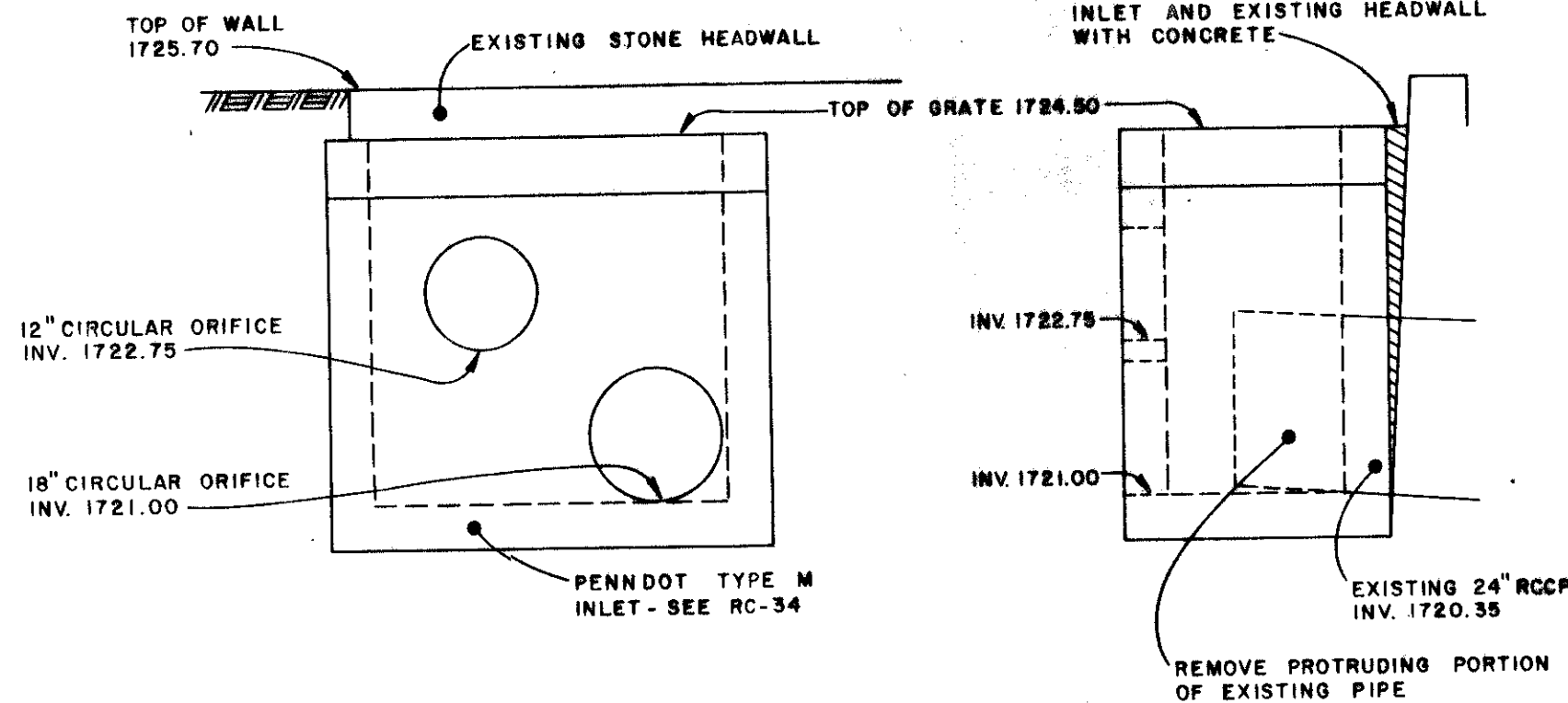


SECTION A-A

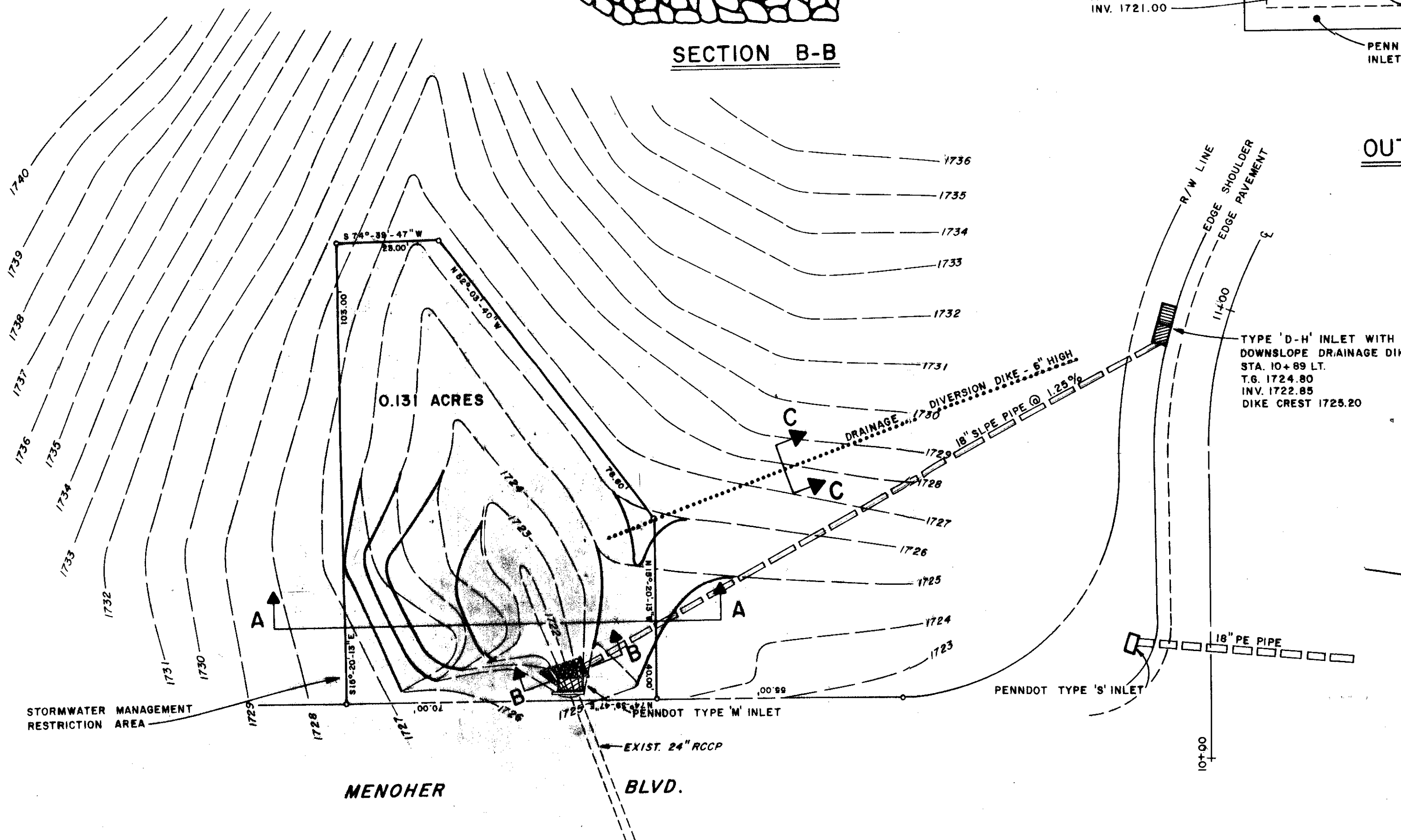
SCALE: HORIZ. 1" = 20'
VERT. 1" = 5'



SECTION B-B

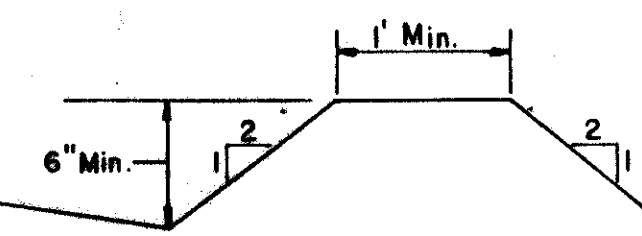


OUTLET STRUCTURE DETAIL



STORMWATER MANAGEMENT DEED RESTRICTION

UPON COMPLETION OF INITIAL DEVELOPMENT NO REGRADING OR FILLING WILL BE PERMITTED WITHIN THE STORMWATER MANAGEMENT RESTRICTION AREA.



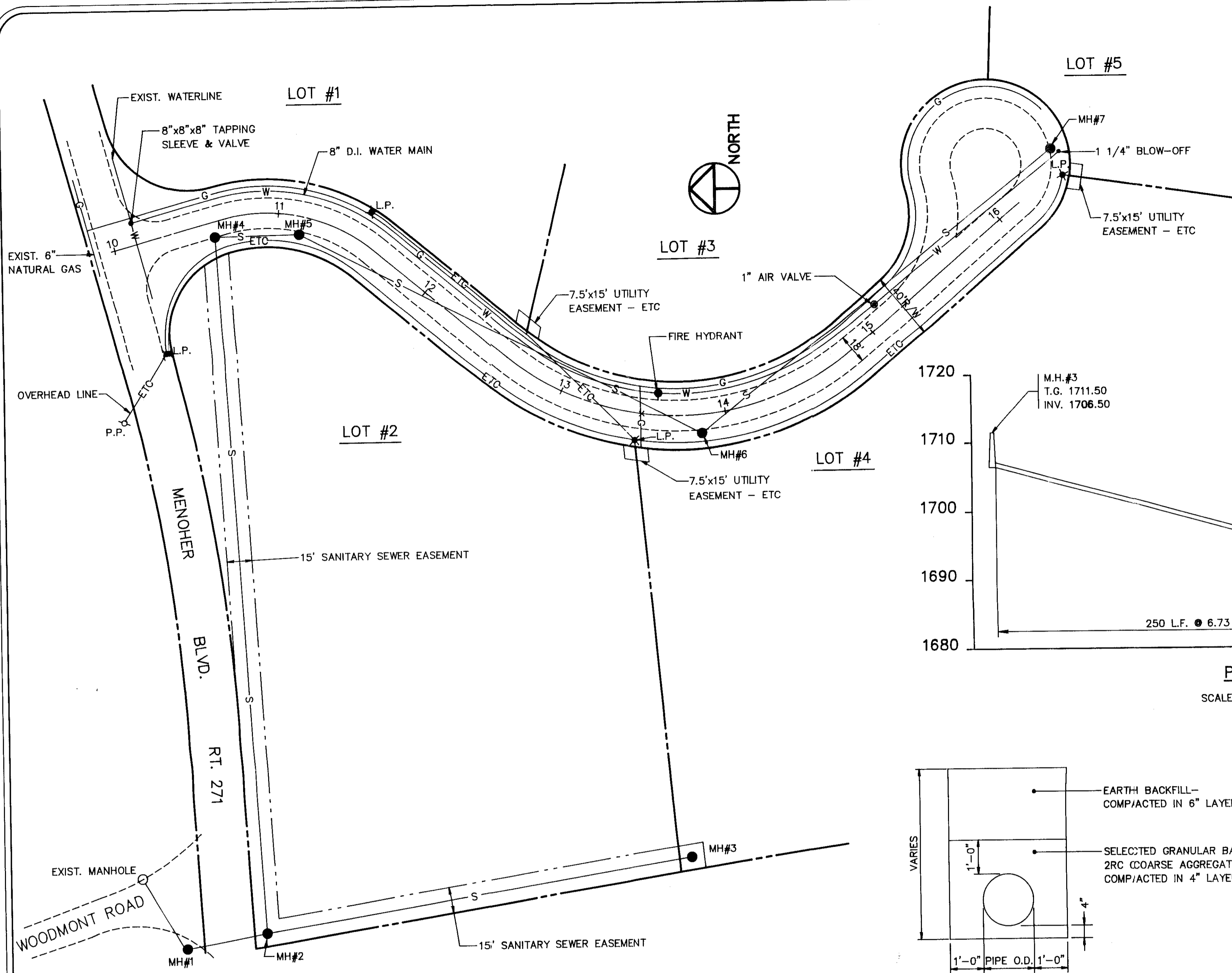
SECTION C-C

N.T.S.

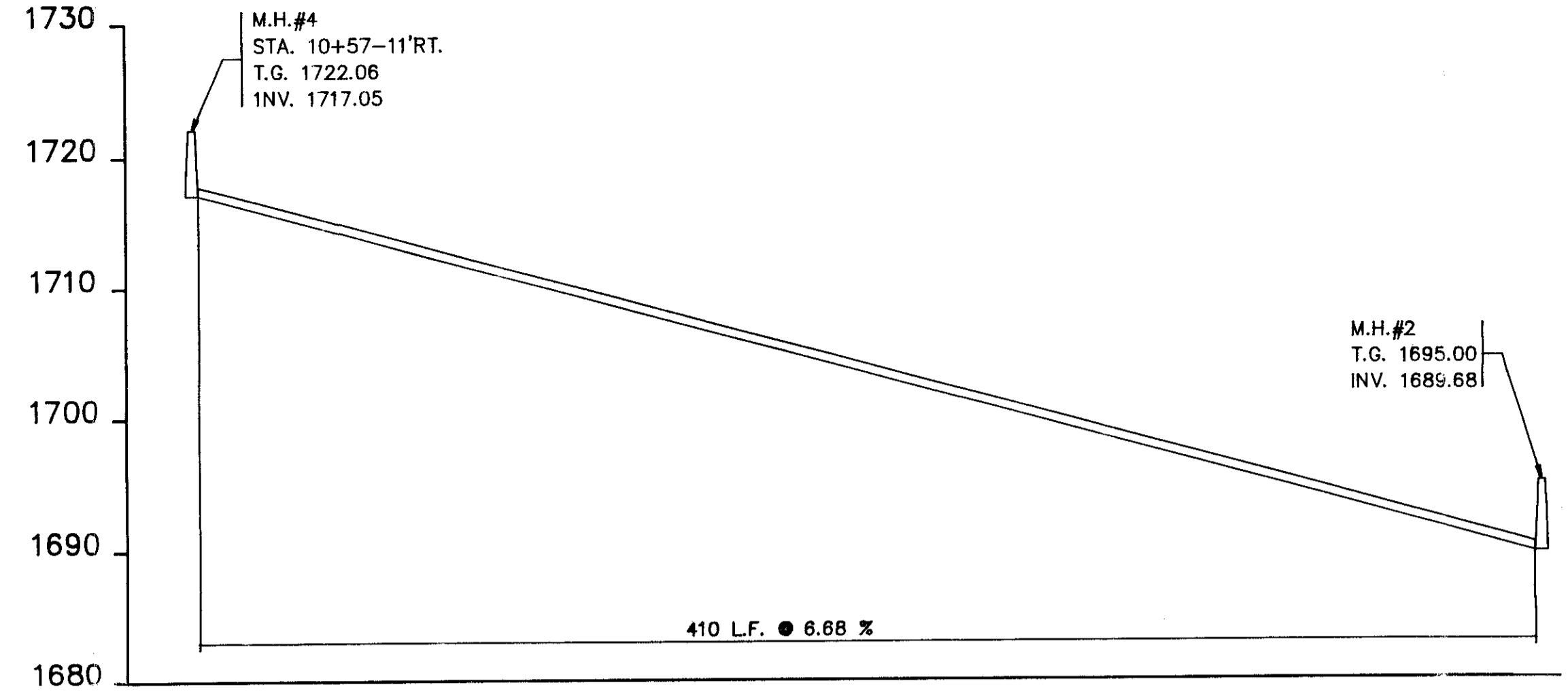
BORTOLI SUBDIVISION
UPPER YODER TOWNSHIP, CAMBRIA COUNTY
STORMWATER MANAGEMENT DETAILS

PREPARED BY
HINKS AND LOCHER ENGINEERS, INC.

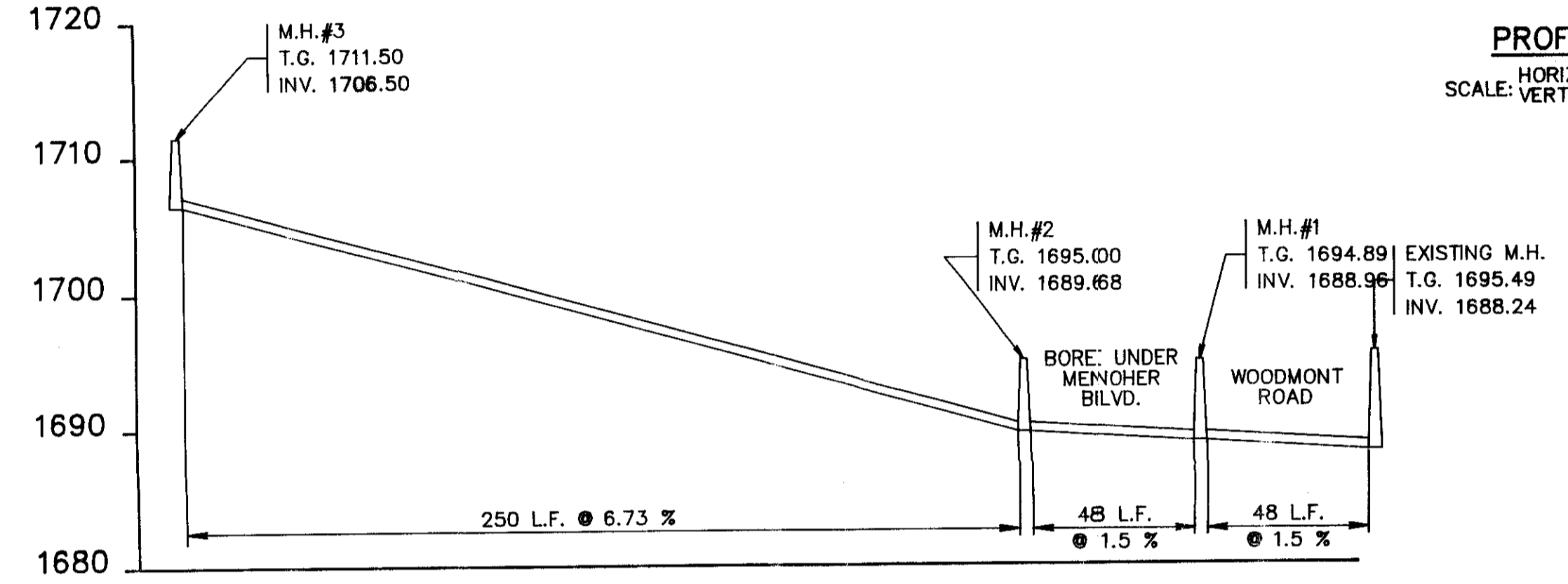
PLAN
SCALE: 1" = 20'



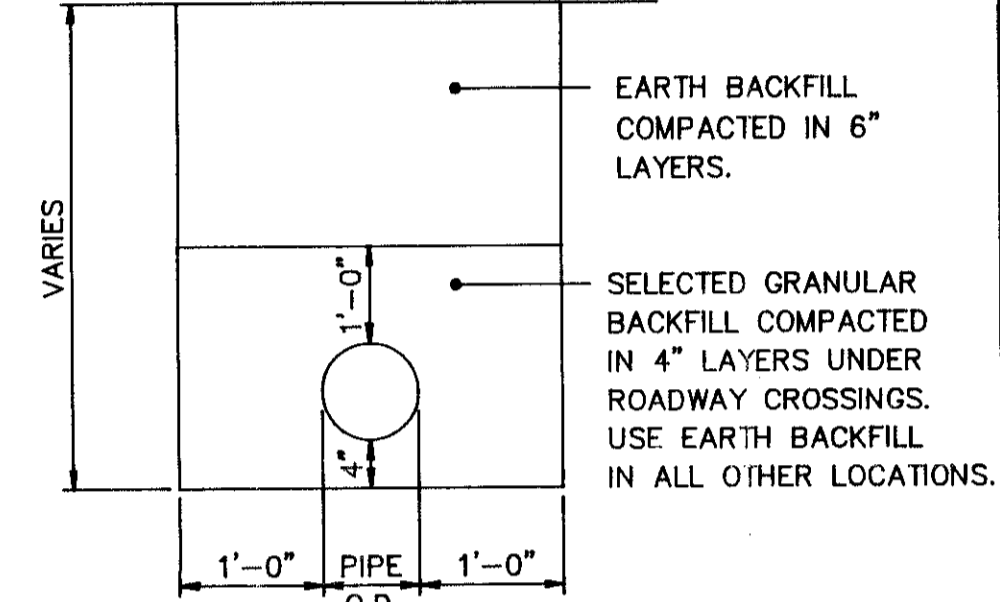
PLAN
SCALE: 1" = 40'



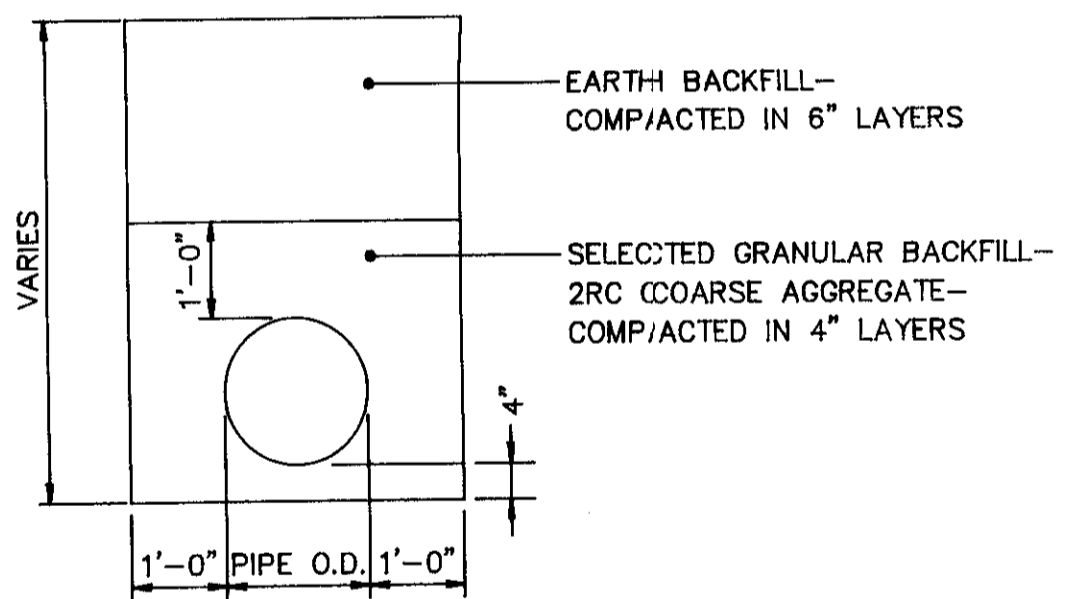
PROFILE
HORIZ. 1" = 40'
SCALE: VERT. 1" = 10'



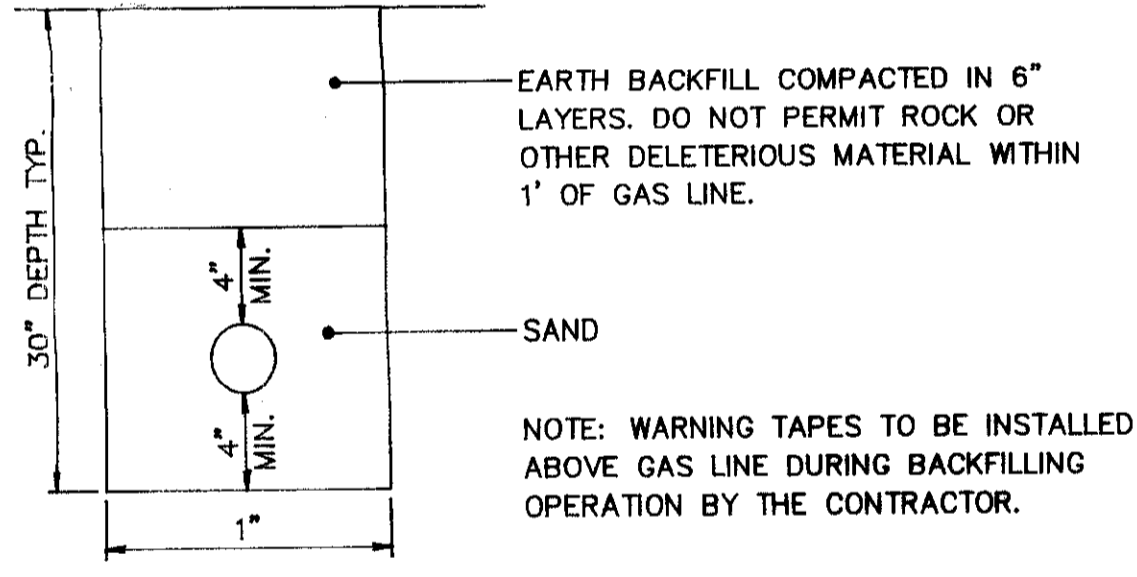
PROFILE
HORIZ. 1" = 40'
SCALE: VERT. 1" = 10'



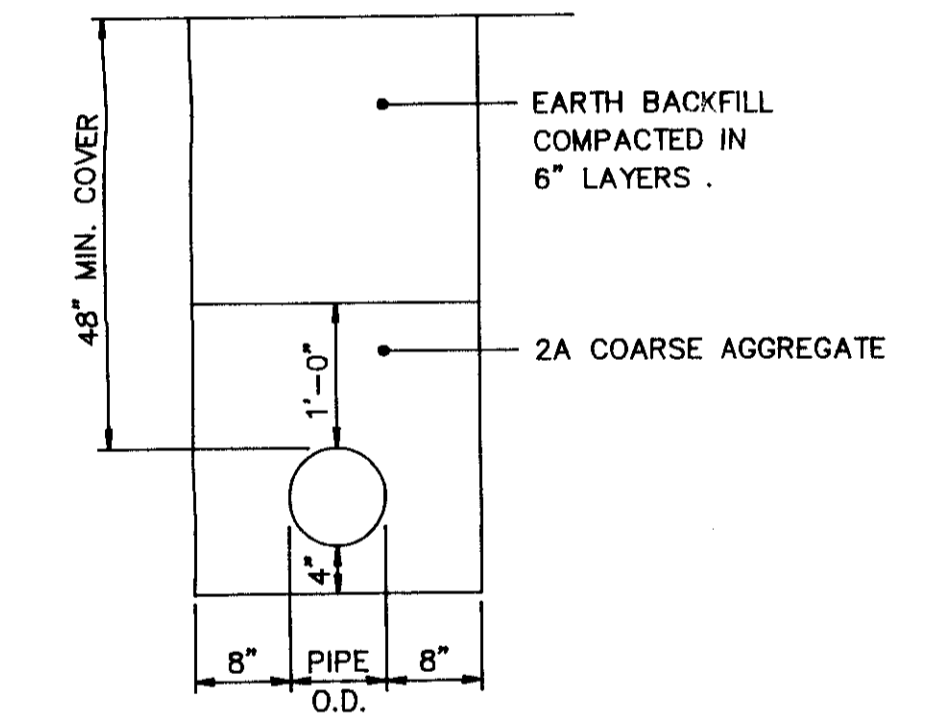
STORM SEWER
TRENCH DETAIL



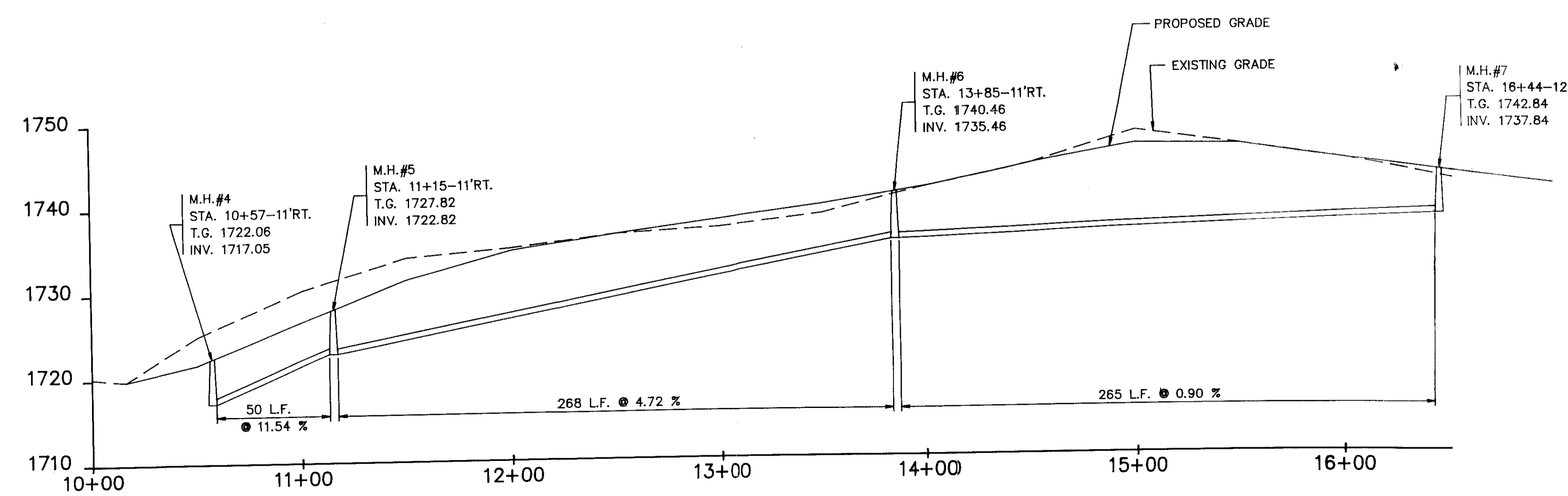
SANITARY SEWER
TRENCH DETAIL



NATURAL GAS
UTILITY TRENCH



WATER
UTILITY TRENCH



PROFILE
SCALE: HORIZ. 1" = 40'
VERT. 1" = 10'

TABULATION OF QUANTITIES

ITEM	QUANTITY
18" POLYETHYLENE PIPE	290 L.F.
TYPE "S" INLETS	3 EA.
TYPE "M" INLET	1 EA.
TYPE "D-H" INLET	1 EA.
8" SANITARY SEWER (BORED)	48 L.F.
8" SANITARY SEWER MANHOLES	7 EA.
SANITARY SEWER LATERALS	5 EA.
8" DUCTILE IRON WATERLINE	650 L.F.
FIRE HYDRANT	1 EA.
1" AIR VALVE	1 EA.
1 1/4" BLOW-OFF	1 EA.
8"x8"x8" TAPPING SLEEVE & VALVE	1 EA.
GRASS RESTORATION	3000 S.Y.
DRAINAGE DIKE	115 L.F.
CL-A CONCRETE (D-WALL)	1.0 C.Y.
R-4 ROCK LINING	6 S.Y.
GASLINE TRENCHING & BACKFILLING 30" AVG. DEPTH, INC. SAND	700 L.F.
GASLINE TRENCHING & BACKFILLING FOR ROAD CROSSINGS, INC. CASING PIPE	35 L.F.
ETC TRENCHING (36" DEPTH)	775 L.F.
ETC TRENCHING, INC. 4" PVC	100 L.F.

NOTE: WARNING TAPES TO BE INSTALLED ABOVE THE UTILITY LINES DURING BACKFILLING OPERATION BY THE CONTRACTOR.

TRENCH WIDTH TO PROVIDE MIN. 1' CLEARANCE BETWEEN ELEC. & TELEPHONE & CABLE.

NOTE: PROVIDE 36" MIN. COVER OVER EACH UTILITY LINE

CONDUIT TO BE PROVIDED & INSTALLED BY CONTRACTOR AT ROAD CROSSINGS.

2" CONDUIT (INCLUDING FITTINGS & 90° WIDE SWEEPS) TO BE PROVIDED BY CONTRACTOR AND INSTALLED BY CABLEVISION

CABLE LINE TO BE INSTALLED BY CABLEVISION

TELEPHONE TO BE PLACED IN TRENCH FOR DIRECT BURIAL OR IN CONDUIT BY GTE

ELEC. LINE TO BE PLACED IN TRENCH FOR DIRECT BURIAL OR IN CONDUIT BY PENELEC

ALL CONDUIT SHALL BE SDR 40 PVC PIPE. CONTRACTOR SHALL EXCAVATE AND BACKFILL TRENCH.

ELEC., TELE. & CABLE
UTILITY TRENCH

FIELD BOOK

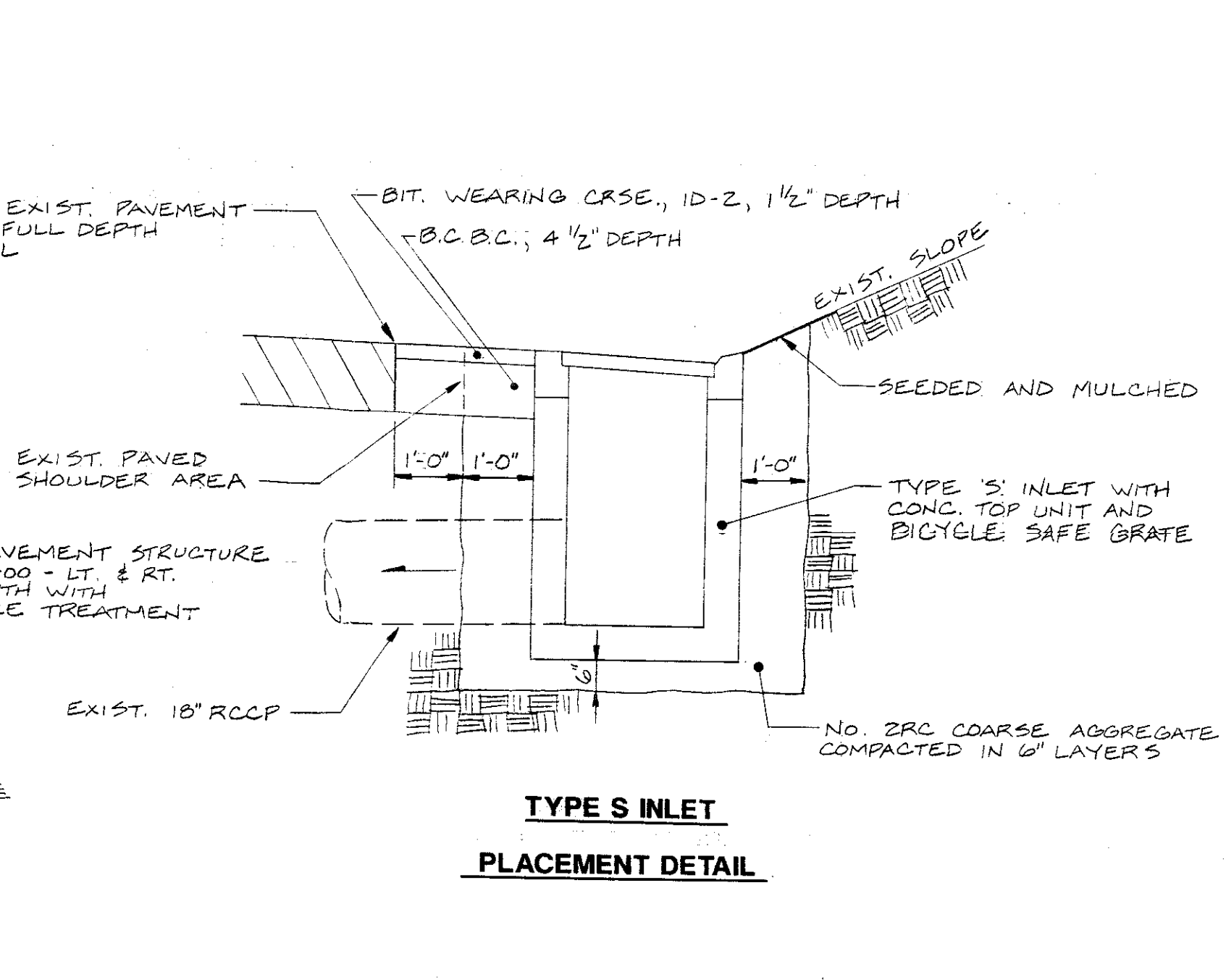
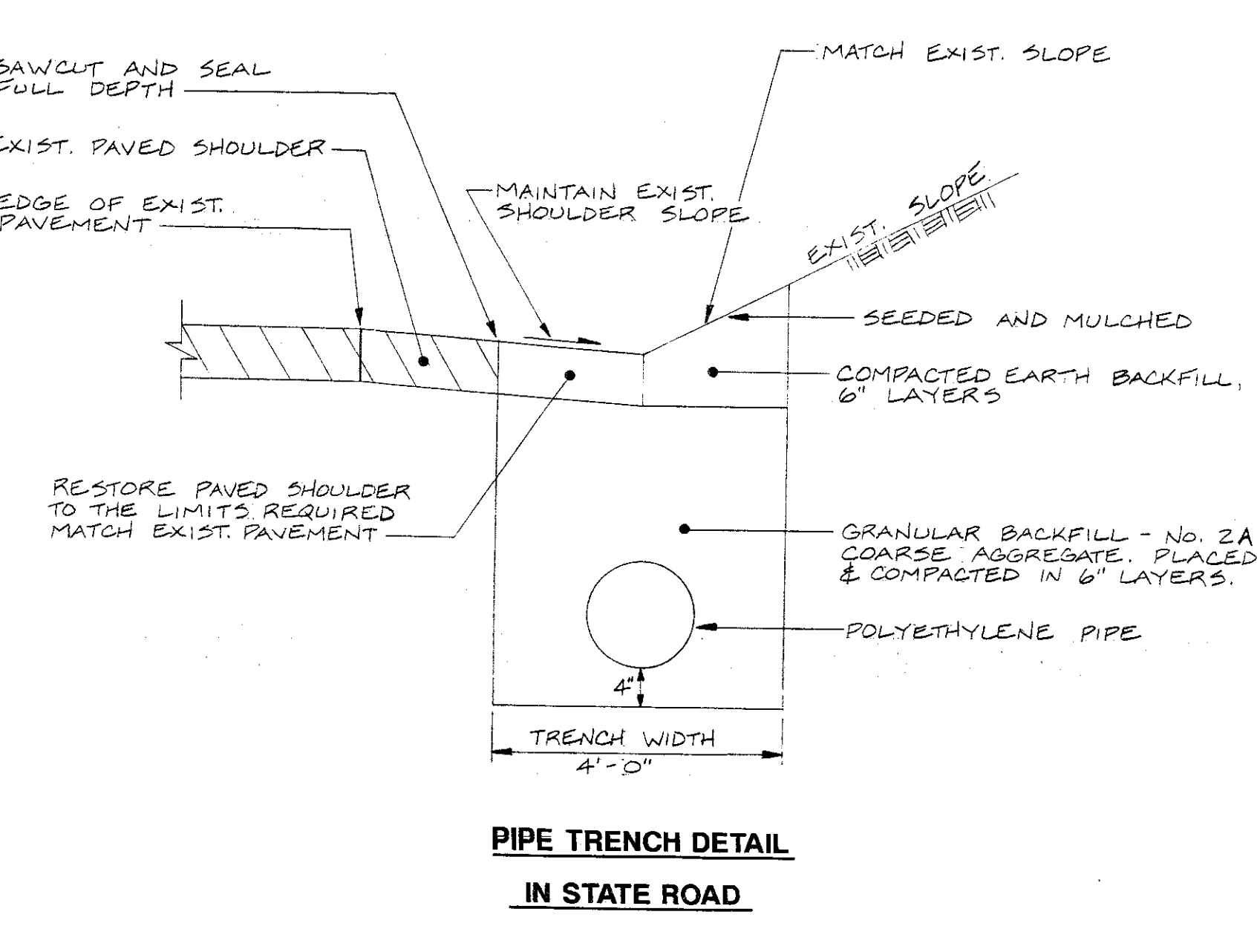
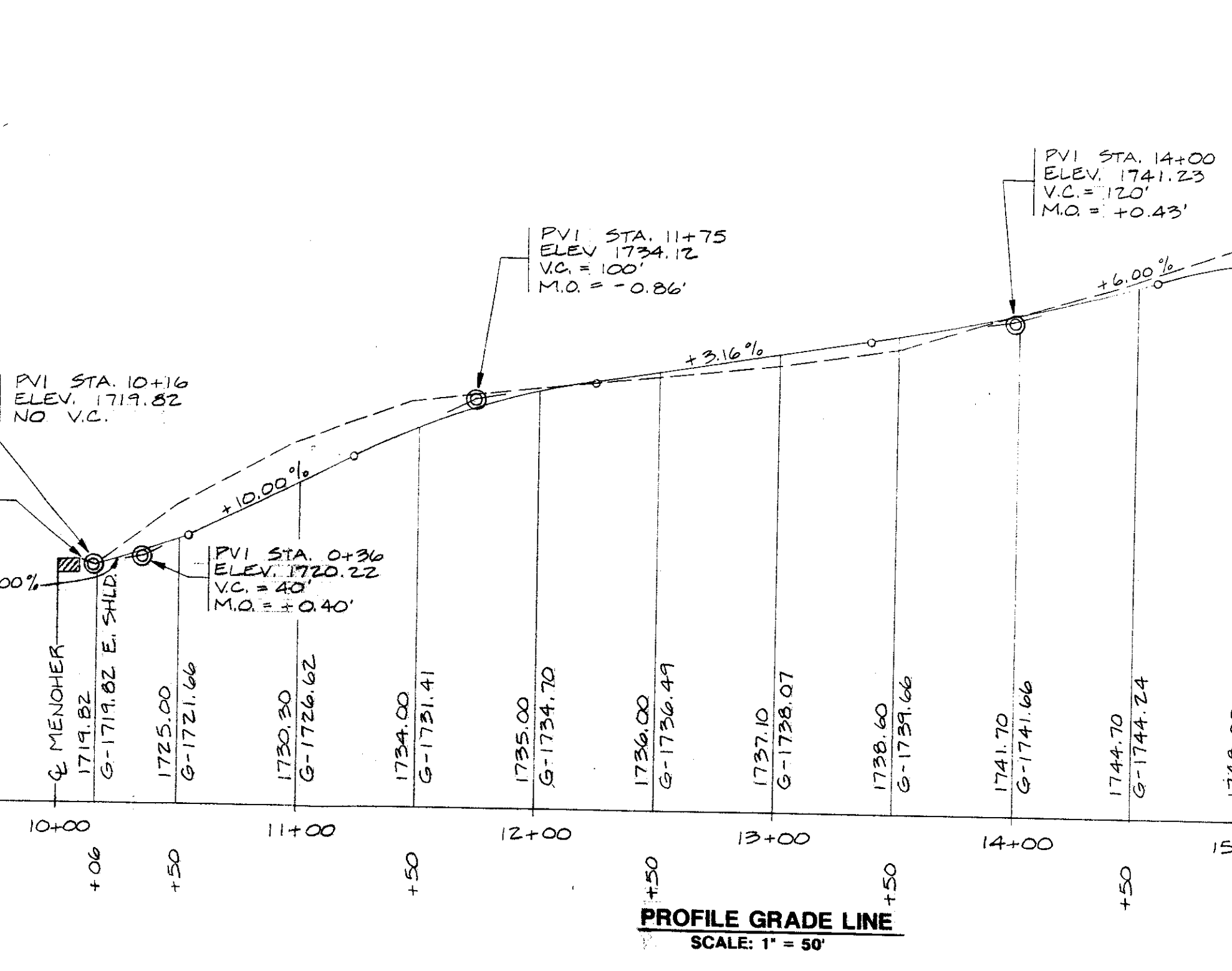
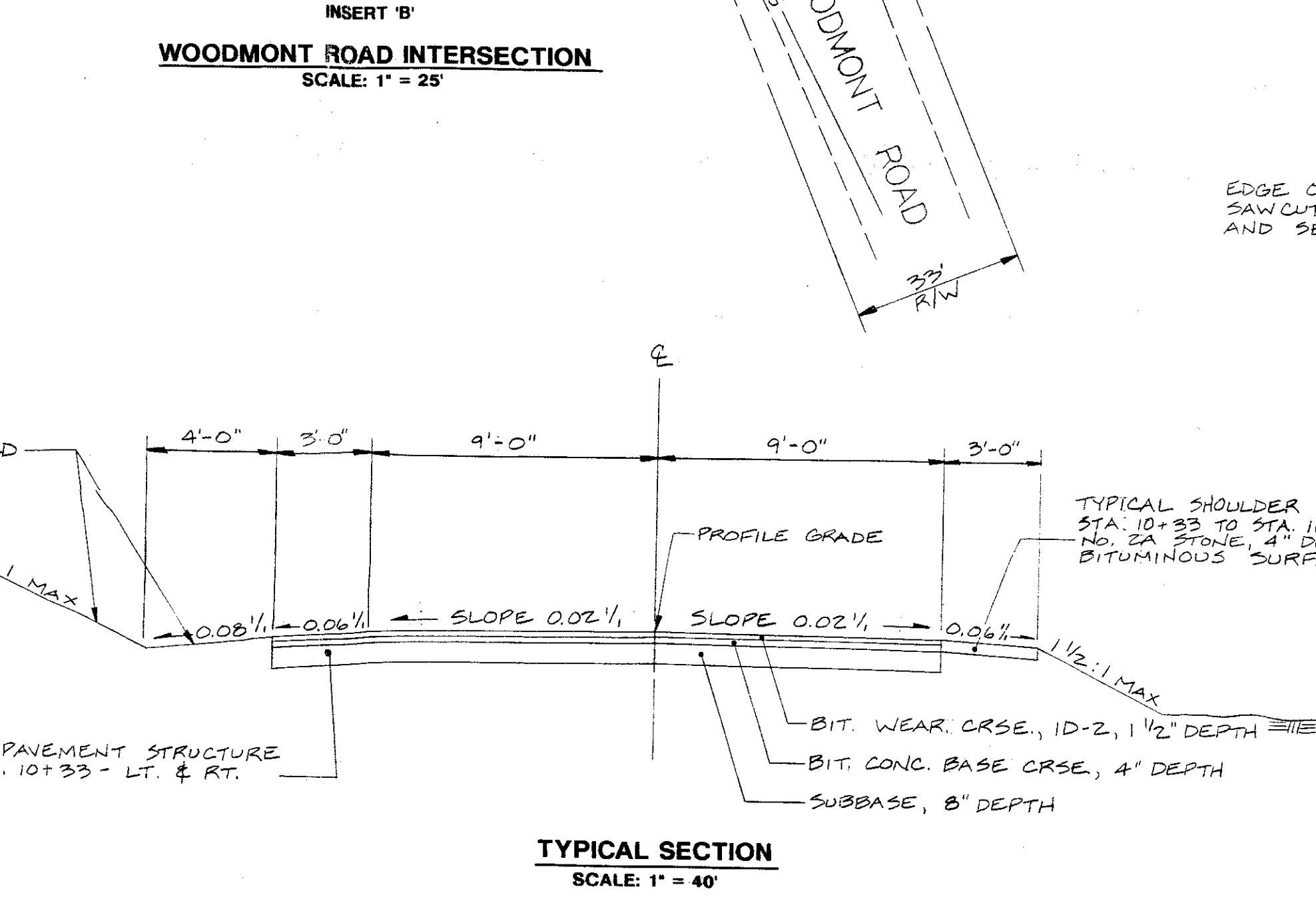
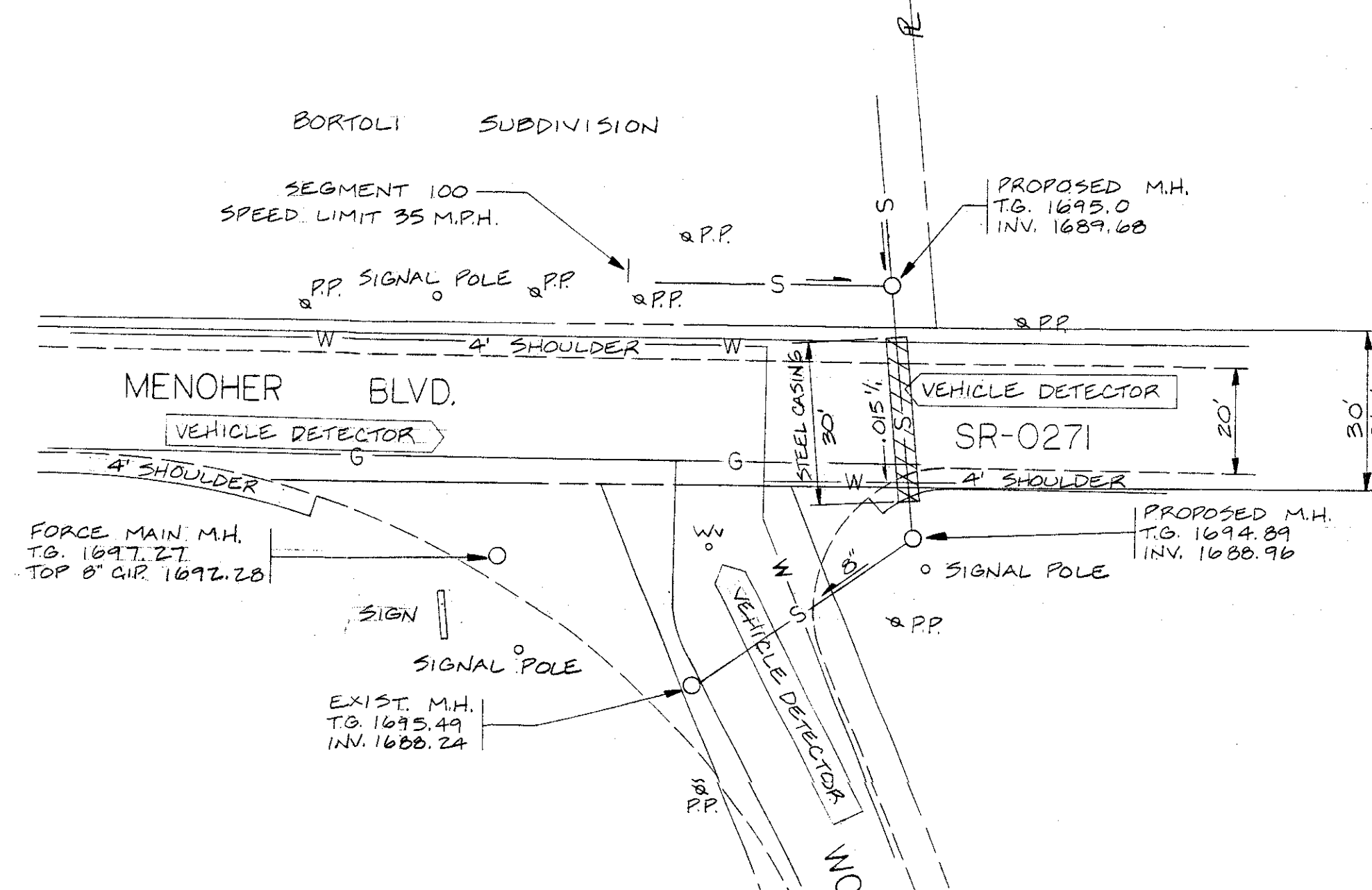
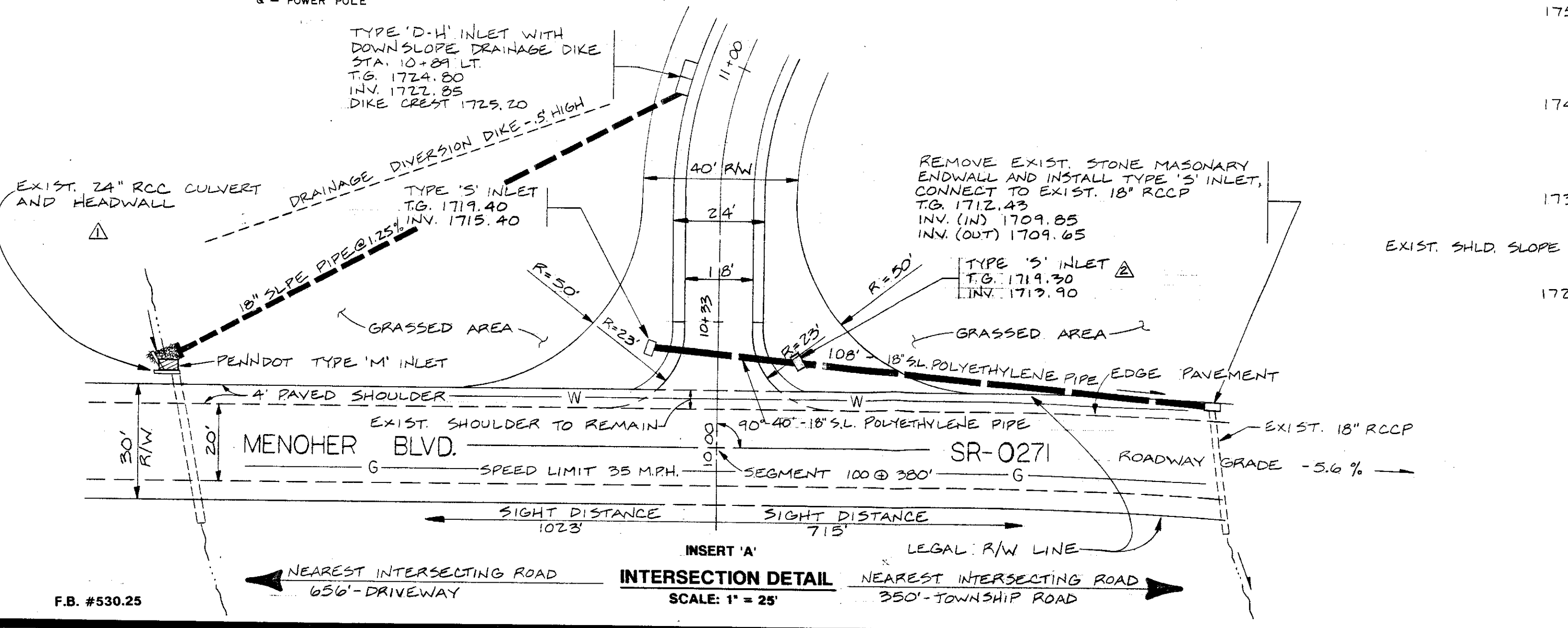
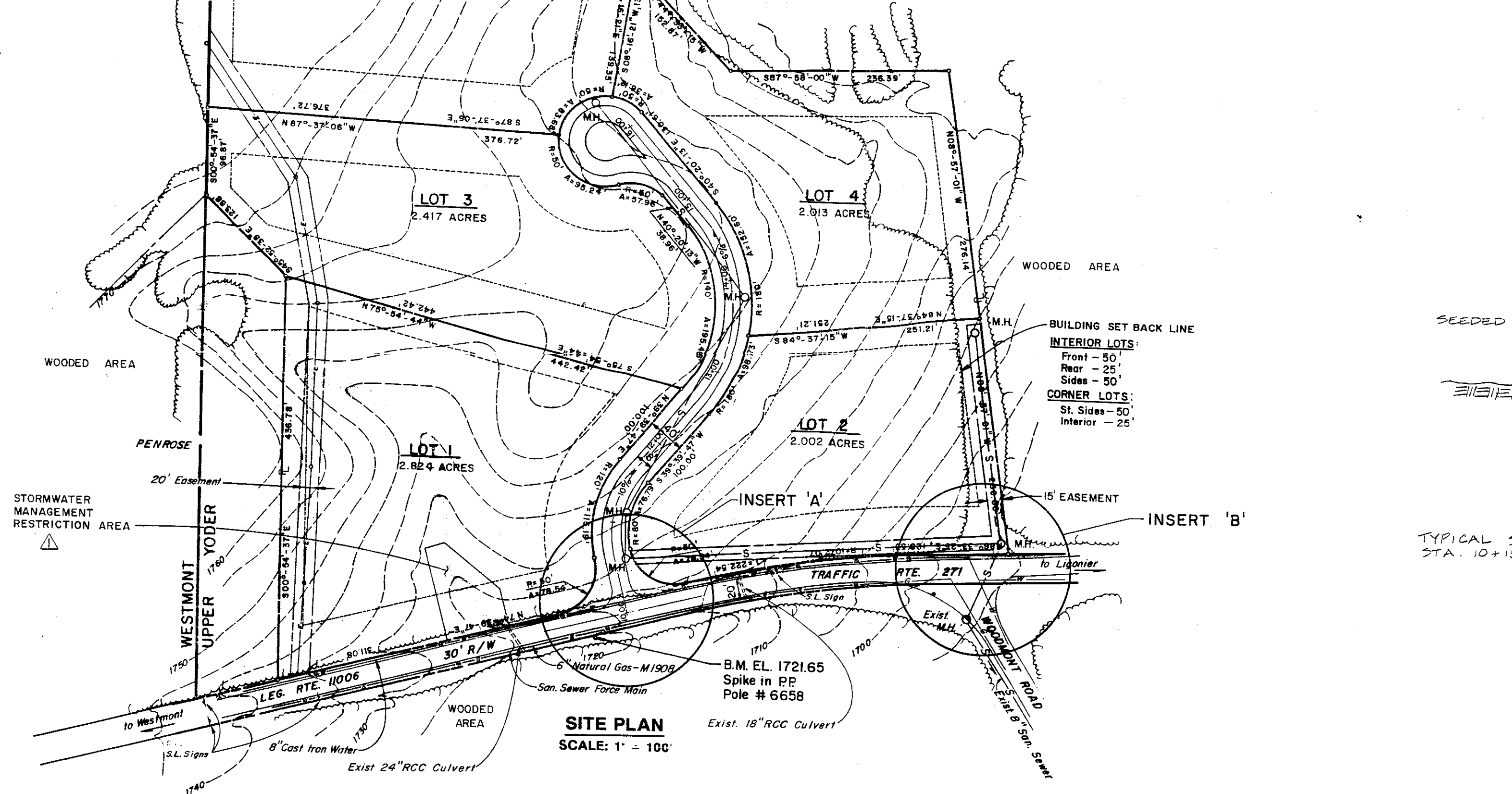
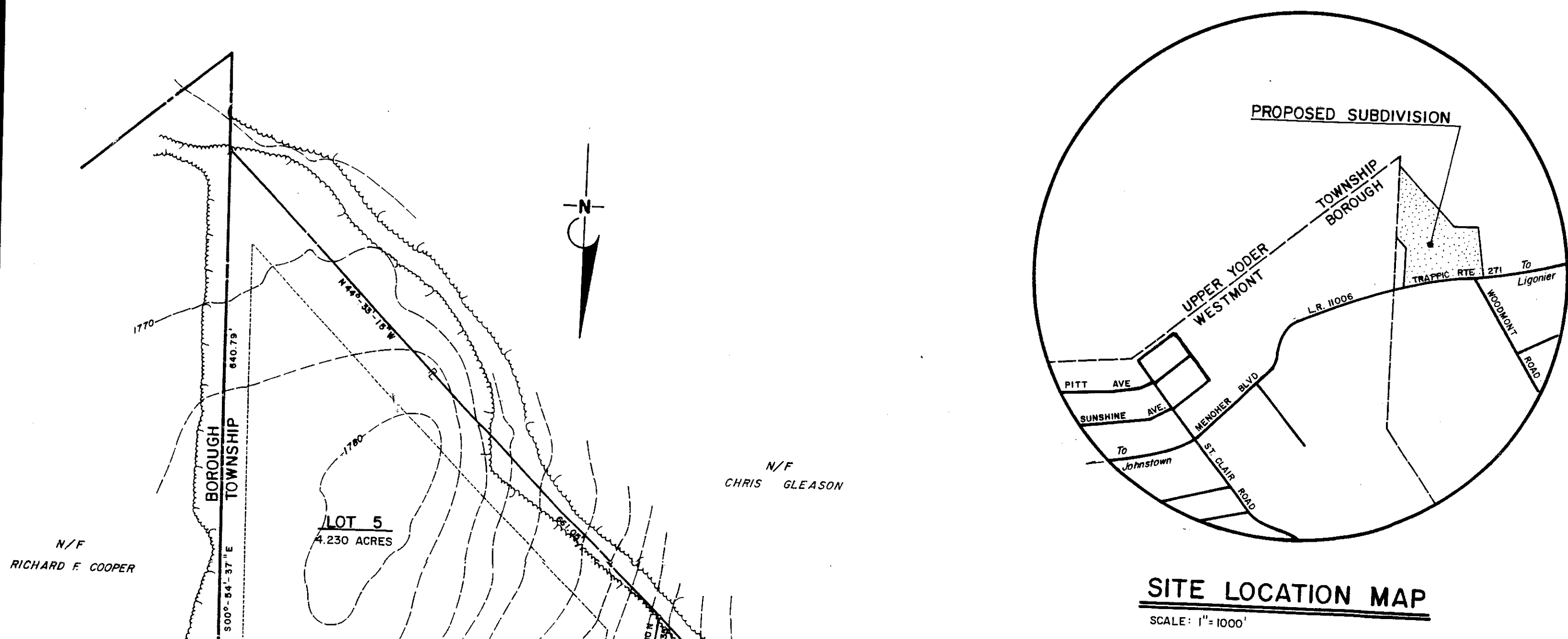
HINKS & LOCHER ENGINEERS, INC.
1780 GOUCHER STREET, JOHNSTOWN, PA. 15905
(814) 255-6735

BORTOLI SUBDIVISION
SITUATE IN UPPER YODER TOWNSHIP
CAMBERIA COUNTY, PENNSYLVANIA

PROJECT NO. HL89-17

UTILITY PLAN, PROFILES & DETAILS

DESIGNED BY: W.A.P.
DRAWN BY: R.D.L.
CHECKED BY: W.A.P.
DATE: AUGUST 1992
SCALE: AS SHOWN
SHEET NO.
DRAWING NO. 8-1-83



GENERAL NOTES

1. THE CONTRACTOR SHALL COMPLY WITH THE REQUIREMENTS OF ACT 172 OF THE GENERAL ASSEMBLY WHICH DEFINES THE PROCEDURES FOR NOTIFICATION TO PUBLIC UTILITIES PRIOR TO ANY EXCAVATION.
2. PROVIDE TRAFFIC CONTROLS IN ACCORDANCE WITH PA DOT PUB. 203, FIGURE 10 A FOR CONSTRUCTION OF DRIVE APPROACH AND STORM DRAINAGE FACILITIES.
3. PROVIDE TRAFFIC CONTROLS IN ACCORDANCE WITH PA DOT PUB. 203, FIGURE 5 FOR BORING SANITARY SEWER CROSSING.
4. DRIVEWAY DESIGN IS IN CONFORMANCE WITH PA DOT PUBLICATION 70, DESIGN CONTROLS.
5. SR-0271 EXIST. PAVEMENT SURFACE, HIGH TYPE BITUMINOUS WEARING COURSE ADT = 5712
6. ALL UTILITIES SHOWN ARE APPROXIMATE.

▲ ADDED INLET 10+22 RT. REVISED DRAINAGE DIKE 10+09 LT.
 ▲ STORM DRAINAGE AND STORMWATER MANAGEMENT REVISIONS

PLAN, PROFILE & DETAILS

BORTOLI SUBDIVISION

SITUATE IN
 UPPER YODER TOWNSHIP
 CAMBRIA COUNTY
 PENNSYLVANIA

HINKS and LOCHER ENGINEERS, INC.



1780 GOUCHER STREET
 JOHNSTOWN, PA. 15905
 (814) 255-6735

Project No.
HL 89-17

Date **APRIL 1991**

Revisions	Mk.	By	Date
▲ TAG			1-13-92
▲ TAG			6-4-92

Drawn By
 R.D.L.
 Checked By
 R.L.W.
 Scale
 AS SHOWN

Sheet No.
1 OF 1
 R-1-99