

TOWNSHIP OF CAMBRIA  
CAMBRIA COUNTY  
PENNSYLVANIA

RESOLUTION # 199

RESOLUTION OF THE SUPERVISORS OF THE TOWNSHIP OF CAMBRIA  
CAMBRIA COUNTY, PENNSYLVANIA

WHEREAS, Terra/Step Associates, a Pennsylvania general partnership, has proposed to dedicate to the Township by deed of conveyance, a certain .061 acre tract of land, and;

WHEREAS, the tract of land proposed to be conveyed is adjacent and will be a part of a certain access road leading into a proposed shopping center site, and;

WHEREAS, the Board of Supervisors of the Township of Cambria deem it in the best interest of the Township and its citizens to accept the dedication of such parcel of land.

NOW, THEREFORE, upon motion of John Makosy  
seconded by Robert Shook, BE IT RESOLVED AND IT IS  
HEREBY RESOLVED:

(1). That the Deed of Terra/Step Associates, a Pennsylvania general partnership, dated August 12, 1987, conveying to the Township of Cambria a certain .061 acre tract of land, is hereby accepted by the Board of Supervisors on behalf of the Township.

(2). The Solicitor is authorized to record the Deed in the Cambria County Recorder of Deed's Office, and a copy of this Resolution together with a draft or survey of the lot which is to be used as a part of the access road shall be filed in the Office of the Clerk of Courts.

RESOLVED AND ENACTED this 14<sup>th</sup> day of Sept., 1987.

FILED  
CLERK OF COURTS  
CAMBRIA CO. PA.

Nov 23 3 31 PM '88

TOWNSHIP OF CAMBRIA

BY:

Fred Bangs  
Supervisor

Robert Wood  
Supervisor

\_\_\_\_\_  
Supervisor

ATTEST

John Makoy  
(Secretary)

I, Norma Zimmerman, Secretary for the Township of Cambria, do hereby certify that this is a true and correct copy of Cambria Township Resolution #199.

Norma Zimmerman  
Norma Zimmerman  
Secretary

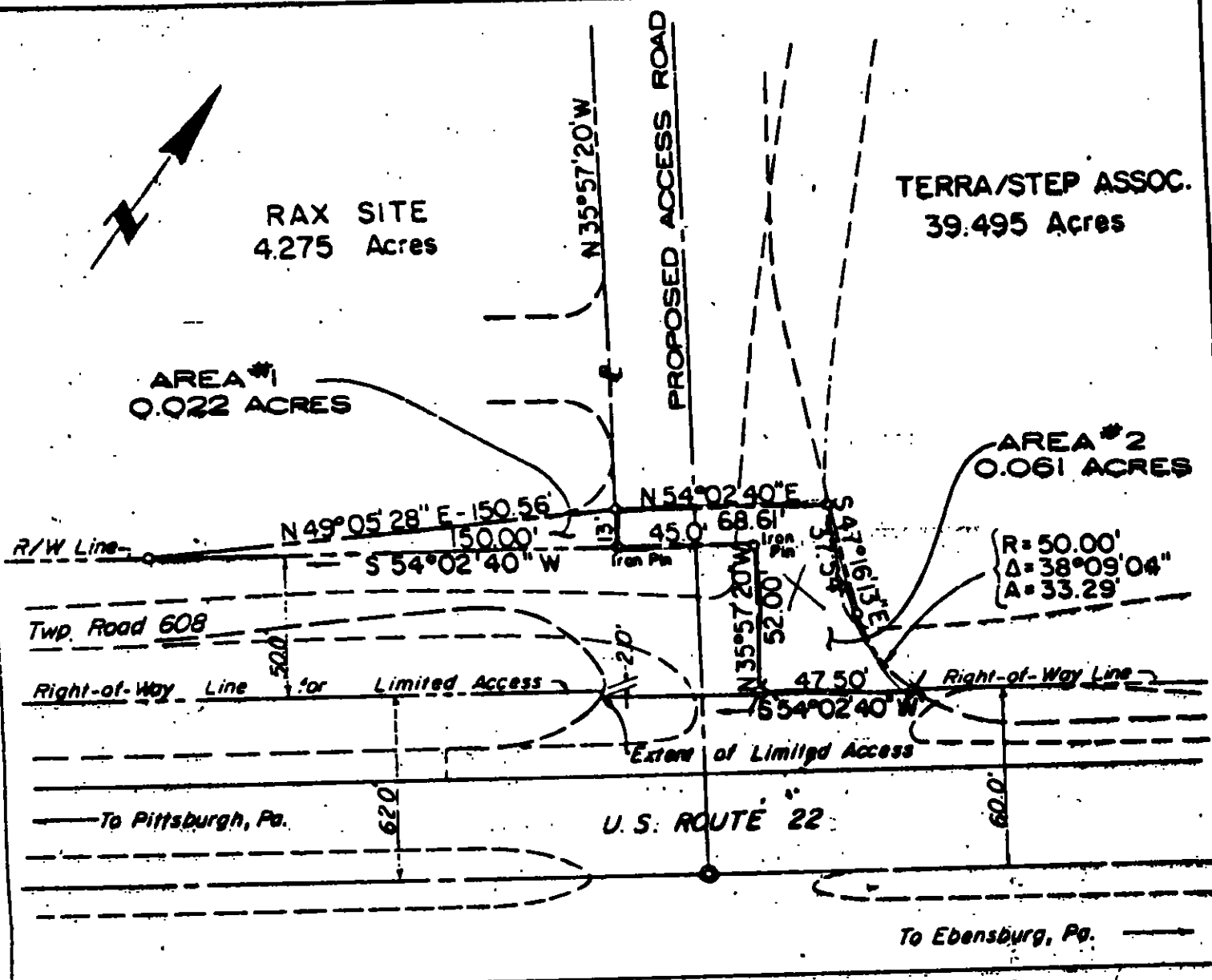


RAX SITE  
4.275 Acres

TERRA/STEP ASSOC.  
39.495 Acres

AREA #1  
0.022 ACRES

AREA #2  
0.061 ACRES



THE BEARINGS ON THIS PLAT ARE BASED  
ON THE  $\epsilon$  BEARING OF U.S. ROUTE 22 AS  
SHOWN ON THE PA. DOT PLANS FOR L.R. 1022  
SECTION 4, Sheet 72 of 92.



PLAT SHOWING PROPERTY  
TO BE CONVEYED TO

**CAMBRIA TOWNSHIP**

FOR

**TOWNSHIP ROAD 608**

SITUATED IN

CAMBRIA TOWNSHIP, CAMBRIA COUNTY, PENNSYLVANIA.

SCALE: 1" = 50'      JULY , 1987

PREPARED BY

**L. ROBERT KIMBALL & ASSOCIATES**  
CONSULTING ENGINEERS & ARCHITECTS  
EBENSBURG, PENNSYLVANIA