

RESOLUTION

LAW OFFICES
GLEASON, DI FRANCESCO,
SHAHADE & MARKOVITZ
SUITE 350
PENN TRAFFIC BUILDING
JOHNSTOWN, PENNSYLVANIA 15901

RESOLUTION

AND NOW this 12th day of December, 1985, upon due consideration and deliberation of the Supervisors of Adams Township and following a formal vote taken by the Supervisors at a public meeting on the date mentioned above, it is hereby resolved that Adams Township hereby accepts the following roads, streets or alleys, as previously dedicated by deed and as maintained and improved by the Township:

1. Sherry Street, that portion of Sherry Street, forty (40) feet in width, as shown on the plan of lots of Forrest J. Krise. As described in the attached survey of Fred Brown, registered surveyor, a copy of such description and map are attached hereto and incorporated by reference.

Such roads, streets or alleys, being previously dedicated to Adams Township for use as a public road as reflected on the plan of lots of Forrest J. Krise.

Such roadway has previously been maintained by the Township and open for public use with a minimum cartway in every instance of at least eighteen (18) feet and a stone base of at least six (6) inches.

Resolution adopted by Adams Township on the date first mentioned above.

ATTEST: (Seal)

Lina Blanchetti
Township Secretary

ADAMS TOWNSHIP SUPERVISORS

Charles E. Weyandt

David W. Muller

Thomas J. ...

Dennis Richard

Emile Wanel

FILED
CLERK OF COURTS
CAMBRIDGE CO., PA.
APR 7 10 28 AM '96



Frederick J. Brown

REGISTERED SURVEYOR

R. D. #1, BOX 58

SIDMAN, PENNSYLVANIA 15955

February 12, 1985

Phone 814 — 487-5781

Suggested description for land to be ordained
by Adams Township in the Forrest J. Krise
Plan of Lots (not an Acknowledged Plan).

- - - -

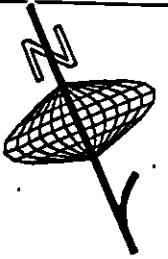
BEGINNING at an iron pin on the north side of
T.303 and on the west side of Sherry Street; thence
along the west side of Sherry Street N 23-00-00 E --
562.65 feet to a point; thence S 67-00-00 E -- 40.00
feet to a point on the east side of Sherry Street;
thence along the east side of Sherry Street and along
a turnaround area the following four courses and
distances:

- (1) S 23-00-00 W -- 40.00 feet to a point
- (2) S 67-00-00 E -- 40.00 feet to a point
- (3) S 23-00-00 W -- 40.00 feet to a point
- (4) N 67-00-00 W -- 40.00 feet to a point; thence

along the east side of Sherry Street S 23-00-00 W --
492.00 feet to an iron pin; thence along T.303
N 53-51-00 W -- 41.08 feet to an iron pin, the place
of beginning, being Sherry Street which is 40.00 feet
wide, has a centerline 567.33 feet long and a 40.00-foot
wide turnaround area near its end.

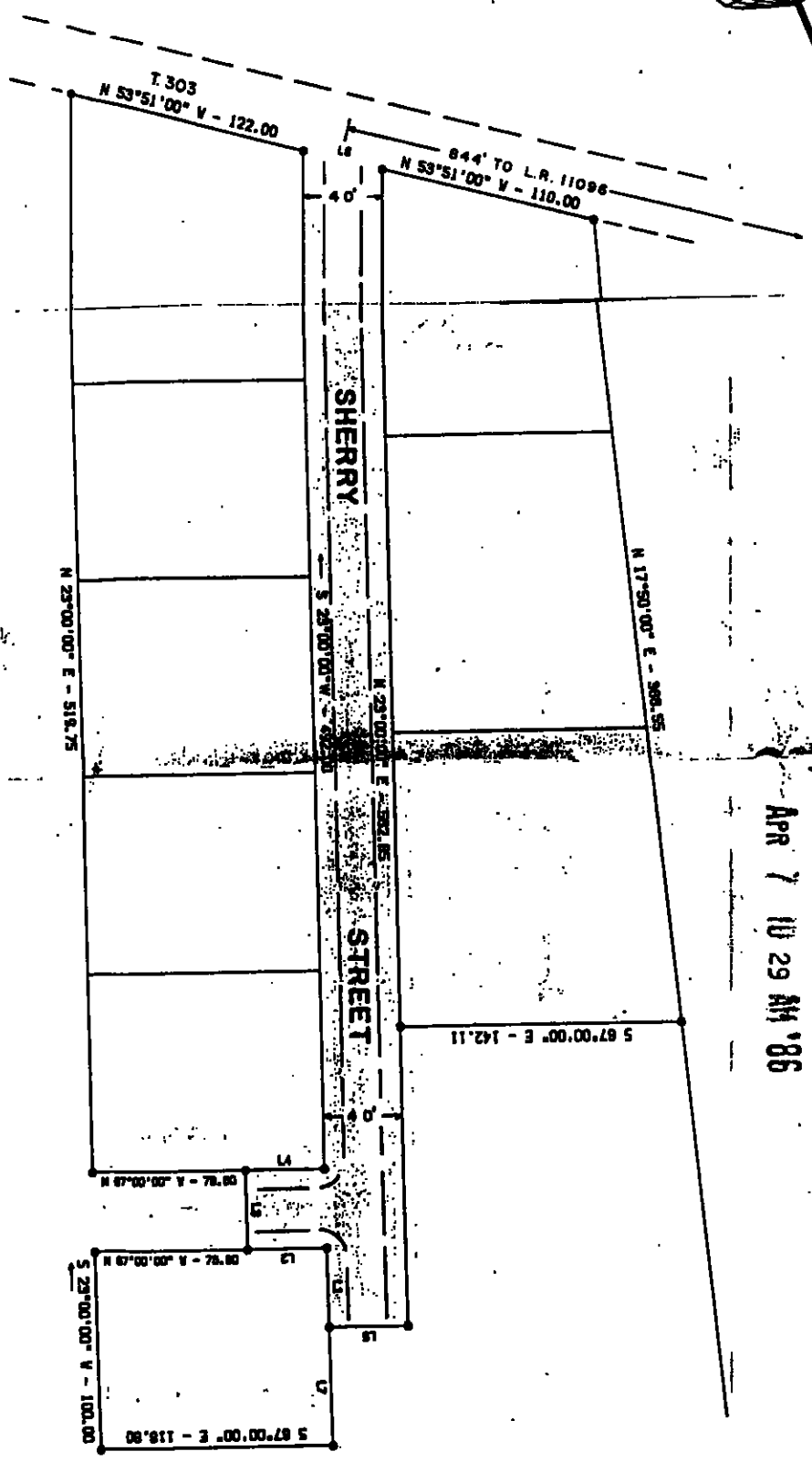
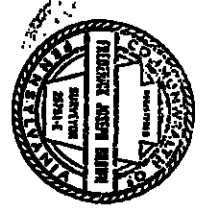
FILED
CLERK OF COURTS
CAMBRIA CO., PA.
Apr 7 10 29 AM '85





FILED
CLERK OF COURTS
CAMBRIA CO. PA.

APR 7 10 29 AM '86



NOTE: THIS IS NOT AN ACCURATE PLAN OF LOTS.
CONTAINS A STAKE POLE WITH 1/4\"/>

LINE	BEARING	DISTANCE
1	S 87°00'00\"/>	40.00
2	S 87°00'00\"/>	40.00
3	S 87°00'00\"/>	40.00
4	S 87°00'00\"/>	40.00
5	S 87°00'00\"/>	40.00
6	S 87°00'00\"/>	40.00
7	S 87°00'00\"/>	40.00
8	S 87°00'00\"/>	40.00
9	S 87°00'00\"/>	40.00
10	S 87°00'00\"/>	40.00
11	S 87°00'00\"/>	40.00
12	S 87°00'00\"/>	40.00
13	S 87°00'00\"/>	40.00
14	S 87°00'00\"/>	40.00
15	S 87°00'00\"/>	40.00
16	S 87°00'00\"/>	40.00
17	S 87°00'00\"/>	40.00
18	S 87°00'00\"/>	40.00
19	S 87°00'00\"/>	40.00
20	S 87°00'00\"/>	40.00
21	S 87°00'00\"/>	40.00
22	S 87°00'00\"/>	40.00
23	S 87°00'00\"/>	40.00
24	S 87°00'00\"/>	40.00
25	S 87°00'00\"/>	40.00
26	S 87°00'00\"/>	40.00
27	S 87°00'00\"/>	40.00
28	S 87°00'00\"/>	40.00
29	S 87°00'00\"/>	40.00
30	S 87°00'00\"/>	40.00
31	S 87°00'00\"/>	40.00
32	S 87°00'00\"/>	40.00
33	S 87°00'00\"/>	40.00
34	S 87°00'00\"/>	40.00
35	S 87°00'00\"/>	40.00
36	S 87°00'00\"/>	40.00
37	S 87°00'00\"/>	40.00
38	S 87°00'00\"/>	40.00
39	S 87°00'00\"/>	40.00
40	S 87°00'00\"/>	40.00
41	S 87°00'00\"/>	40.00
42	S 87°00'00\"/>	40.00
43	S 87°00'00\"/>	40.00
44	S 87°00'00\"/>	40.00
45	S 87°00'00\"/>	40.00
46	S 87°00'00\"/>	40.00
47	S 87°00'00\"/>	40.00
48	S 87°00'00\"/>	40.00
49	S 87°00'00\"/>	40.00
50	S 87°00'00\"/>	40.00
51	S 87°00'00\"/>	40.00
52	S 87°00'00\"/>	40.00
53	S 87°00'00\"/>	40.00
54	S 87°00'00\"/>	40.00
55	S 87°00'00\"/>	40.00
56	S 87°00'00\"/>	40.00
57	S 87°00'00\"/>	40.00
58	S 87°00'00\"/>	40.00
59	S 87°00'00\"/>	40.00
60	S 87°00'00\"/>	40.00
61	S 87°00'00\"/>	40.00
62	S 87°00'00\"/>	40.00
63	S 87°00'00\"/>	40.00
64	S 87°00'00\"/>	40.00
65	S 87°00'00\"/>	40.00
66	S 87°00'00\"/>	40.00
67	S 87°00'00\"/>	40.00
68	S 87°00'00\"/>	40.00
69	S 87°00'00\"/>	40.00
70	S 87°00'00\"/>	40.00
71	S 87°00'00\"/>	40.00
72	S 87°00'00\"/>	40.00
73	S 87°00'00\"/>	40.00
74	S 87°00'00\"/>	40.00
75	S 87°00'00\"/>	40.00
76	S 87°00'00\"/>	40.00
77	S 87°00'00\"/>	40.00
78	S 87°00'00\"/>	40.00
79	S 87°00'00\"/>	40.00
80	S 87°00'00\"/>	40.00
81	S 87°00'00\"/>	40.00
82	S 87°00'00\"/>	40.00
83	S 87°00'00\"/>	40.00
84	S 87°00'00\"/>	40.00
85	S 87°00'00\"/>	40.00
86	S 87°00'00\"/>	40.00
87	S 87°00'00\"/>	40.00
88	S 87°00'00\"/>	40.00
89	S 87°00'00\"/>	40.00
90	S 87°00'00\"/>	40.00
91	S 87°00'00\"/>	40.00
92	S 87°00'00\"/>	40.00
93	S 87°00'00\"/>	40.00
94	S 87°00'00\"/>	40.00
95	S 87°00'00\"/>	40.00
96	S 87°00'00\"/>	40.00
97	S 87°00'00\"/>	40.00
98	S 87°00'00\"/>	40.00
99	S 87°00'00\"/>	40.00
100	S 87°00'00\"/>	40.00

FOREST J. KRISSE, PLAN OF LOTS
RODMS TWP., CAMBRIA CO., PA

SOILED BY	REVISED BY	DATE
NO PREVISION	F. BROWN	
DATE	REVISED BY	
FEB. 2, 1988		

FREDERICK J. BROWN, P.L.S.
RD 1, BOX 58, SIDMAN, PA 15855

FILE NO. 1 REVISED NO. 1

LAW OFFICES
GLEASON, DI FRANCESCO, SHAHADE & MARKOVITZ

SUITE 350, PENN TRAFFIC BUILDING
JOHNSTOWN, PENNSYLVANIA 15901

ANDREW J. GLEASON
ROBERT DAVIS GLEASON
SAMUEL R. DI FRANCESCO, JR.
WILLIAM G. SHAHADE
MYRON I. MARKOVITZ
ANDREW DAVIS GLEASON
WILLIAM GLEASON BARBIN
ANN ELIZABETH REESMAN
KEVIN J. ROZICH

(814) 535-5561

PATRICK A. GLEASON
(1934-1982)

March 27, 1986

James McNulty
Clerk of Courts
Court House
Ebensburg, PA 15931

Re: Adams Township Road Resolution

Dear Mr. McNulty:

Please find enclosed a Resolution of the Adams Township Supervisors accepting Sherry Street in Adams Township, Cambria County.

Please also find attached to the Resolution, a survey of Fred J. Brown, Adams Township Engineer, describing Sherry Street and a photocopy of a map drawn by Fred Brown, indicating the general configuration of Sherry Street. Enclosed also, find a check for \$15.00 to cover the filing fee for the same. Would you please cause this to be filed in the Road Docket in your office and a copy thereof, which has been attached, to be forwarded to the District Office for the Pennsylvania Department of Transportation, in Hollidaysburg. Thank you very much for your attention to this matter.

Sincerely,

GLEASON, DI FRANCESCO, SHAHADE &
MARKOVITZ

By

William Gleason Barbin
William Gleason Barbin

WGB/pas
Enclosures

cc: Gina Blanchetti

FILED
CLERK OF COURTS
CAMBRIA CO. PA.
APR 7 10 28 AM '86