

ADAMS TOWNSHIP RESOLUTION

DATED:

LAW OFFICES
GLEASON, DI FRANCESCO,
SHAHADE & MARKOVITZ
SUITE 350
PENN TRAFFIC BUILDING
JOHNSTOWN, PENNSYLVANIA 15901

FILED
CLERK OF COURTS
CAMBERA CO. PA.
FEB 6 2 32 PM '85

Rd. Aet. #3, 1985

RESOLUTION

AND NOW this 31 day of January, 1985, upon due consideration and deliberation of the Supervisors of Adams Township and following a formal vote taken by the Supervisors at a public meeting on the date mentioned above, it is hereby resolved that Adams Township hereby accepts the following road, street or alley, as previously dedicated by deed and as maintained and improved by the Township:

1. Nealyn Drive, that portion of Nealyn Drive, forty (40) feet in width, connecting to legislative Route 11009 in the Elton area of Adams Township, and as described in the attached survey of Fred Brown, registered surveyor, a copy of such description and map are attached hereto and incorporated by reference.

Such road, street or alley, being previously dedicated to Adams Township for use as a public road as reflected on each plan of lots recorded in the Cambria County, Recorder of Deeds Office.

Such roadway has previously been maintained by the Township and open for public use with a minimum cartway in every instance of at least eighteen (18) feet and a stone base of at least six (6) inches.

Resolution adopted by Adams Township on the date first mentioned above.

ATTEST: (Seal)

Lina Blanchette
Township Secretary

ADAMS TOWNSHIP SUPERVISORS

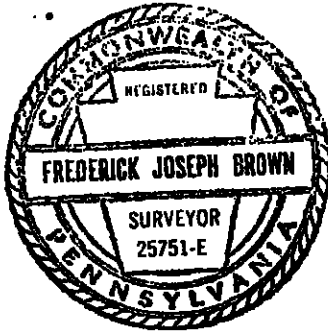
David M. Hollen

Therese D. Duce

Emile W. Duce

Dennis Bilard

Chas. E. Weyant Jr.



Frederick J. Brown

REGISTERED SURVEYOR

R. D. #1, BOX 58

SIDMAN, PENNSYLVANIA 15955

December 17, 1984

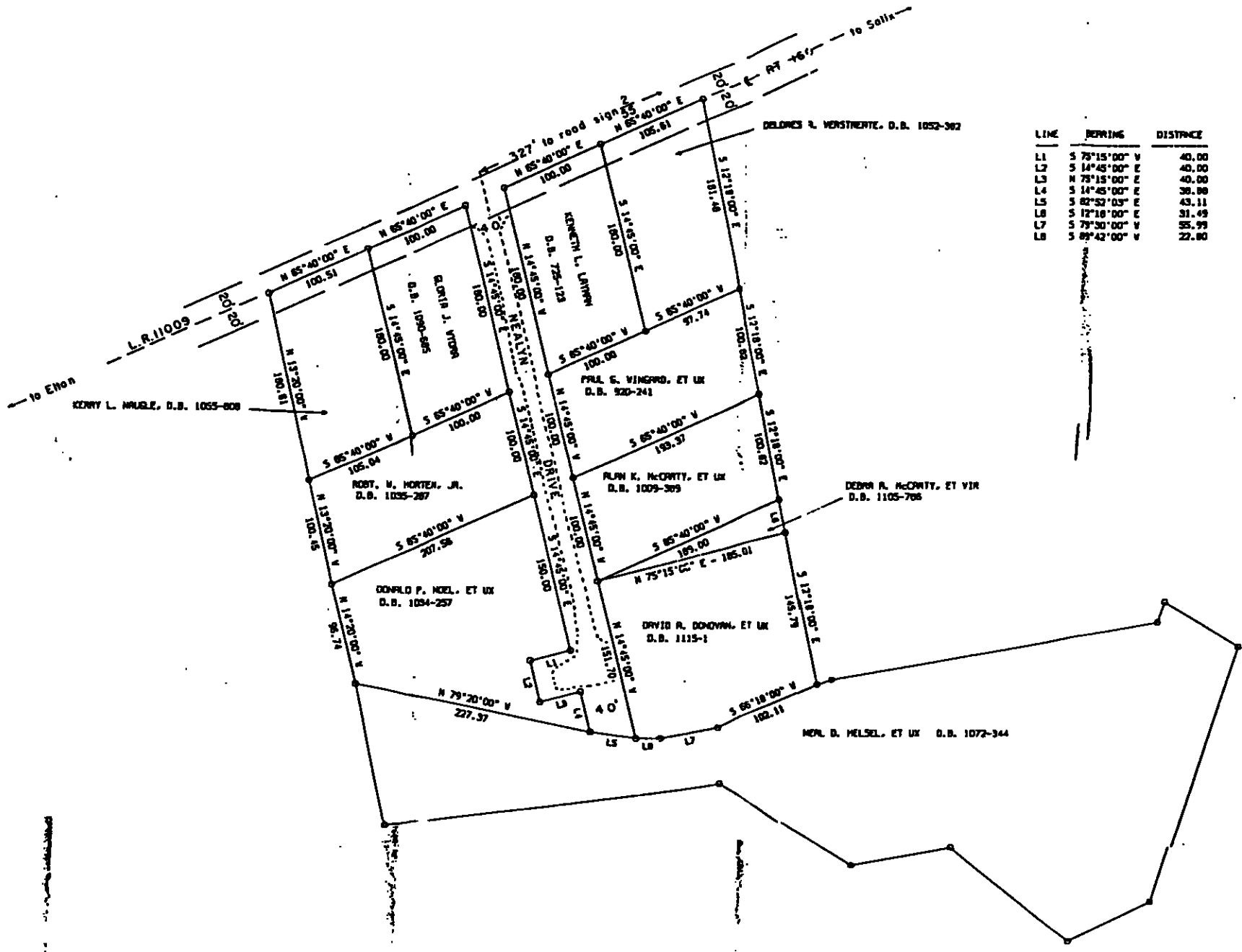
Phone 814 — 487-5781

Suggested description for Ordination of Nealyn Drive

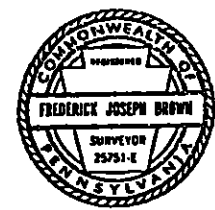
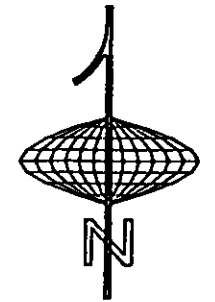
- - - -

BEGINNING at a point in the centerline of L.R.11009 (said L.R.11009 has a right-of-way 40 foot wide, measured 20 foot on either side of the centerline); thence along the east side of Nealyn Drive S 14-45-00 E -- 531.70 feet to a point; thence across the end of Nealyn Drive N 82-52-03 W -- 43.11 feet to a point on the west side of Nealyn Drive; thence along the west side of Nealyn Drive the following five courses and distances:

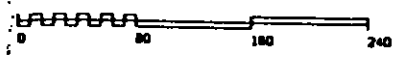
- (1) N 14-45-00 W -- 38.88 feet to a point
- (2) S 75-15-00 W -- 40.00 feet to a point
- (3) N 14-45-00 W -- 40.00 feet to a point
- (4) N 75-15-00 E -- 40.00 feet to a point
- (5) N 14-45-00 W -- 430.00 feet to a point in the centerline of L.R.11009; thence along the centerline of L.R.11009 N 65-40-00 E -- 40.57 feet to a point, the place of beginning, and having an 18-foot wide macadam cartway with a stone base approximately 445 feet long built thereon, and a 40-foot wide turnaround near the end, as calculated by Frederick J. Brown, Professional Land Surveyor 25751-E.



LINE	BEARING	DISTANCE
L1	S 75°15'00\" V	40.00
L2	S 14°45'00\" E	40.00
L3	N 75°15'00\" E	40.00
L4	S 14°45'00\" E	36.00
L5	S 82°52'03\" E	43.11
L6	S 12°18'00\" E	31.49
L7	S 79°30'00\" V	95.99
L8	S 89°42'00\" V	22.00



NOTE: NEALYN DRIVE HAS AN 18' WIDE MACADAM CARTWAY WITH A STONE BASE AND IS APPROXIMATELY 445' LONG.



NEALYN DRIVE ADAMS TWP., CAMBRIA CO., PA		
SCALE: 80 FEET/INCH	APPROVED BY: F. BROWN	DRAWN BY: COMPUTER
DATE: DEC. 17, 1994		REVISED BY:
FREDERICK J. BROWN, P.L.S. RD 1, BOX 58, SIDMAN, PA 15955		