

JUN 16 12 33 PM '82

Ord. No. # 2 - 1982

ORDINANCE NO. 146

AN ORDINANCE OF RICHLAND TOWNSHIP, CAMBRIA COUNTY, PENNSYLVANIA FORMALLY ACCEPTING AS A PUBLIC HIGHWAY AND ESTABLISHING THE CENTER LINE AND WIDTH OF ALLENBILL DRIVE, FORMERLY RUBAL DRIVE, ON THE PLAN OF LOTS OF THE JOHNSTOWN INDUSTRIAL PARK.

BE IT ORDAINED AND ENACTED by the Board of Supervisors of Richland Township, Cambria County, Pennsylvania under the authority the Second Class Township Code, Act of May 1, 1933, (P.L. 103 No. 69 as amended) Article XI, and it is hereby ordained and enacted as follows:

SECTION 1. Allenbill Drive, formerly Rubal Drive, hereinafter described, located in the Johnstown Industrial Park, Richland Township, Cambria County, Pennsylvania previously dedicated as a public highway is hereby accepted by Richland Township as a public highway.

SECTION 2. The legal description of that portion of Allenbill Drive, formally accepted as a public highway is as follows:

BEGINNING at the center line of Allenbill Drive, formerly Rubal Drive, at end of existing accepted street, Ordinance No. 93, thence by the center line of Allenbill Drive $N19^{\circ}-55'-52''W$ a distance of 394.81' to a point, thence by same by a curve to the left an arc distance of 253.45' to a point, thence by same $N51^{\circ}-20'-52''W$ a distance of 205.00' to a point, thence by same by a curve to the right an arc distance of 213.87' to a point, thence by same $N18^{\circ}-18'-22''W$ a distance of 427.83' to a point, thence by same $S87^{\circ}-36'-53''W$ a distance of 717.62' to a point in the center line of Industrial Park Road, the place of beginning.

Allenbill Drive being sixty (60) feet in width.

BEING shown on plan of Johnstown Industrial Park prepared by L. Robert Kimbal, March 1971, and revised February 2, 1972, December 10, 1973, February 24, 1975, and November 14, 1975.

ALSO being on revised plan of lots 9, 10, 11, and 15 prepared by Hinks and Locher Engineers, Inc., June 10, 1976.

SECTION 3. All Ordinances or parts thereof inconsistent herewith are hereby repealed.

ENACTED AND ORDAINED this 14th day of June, 1982.

ATTEST:

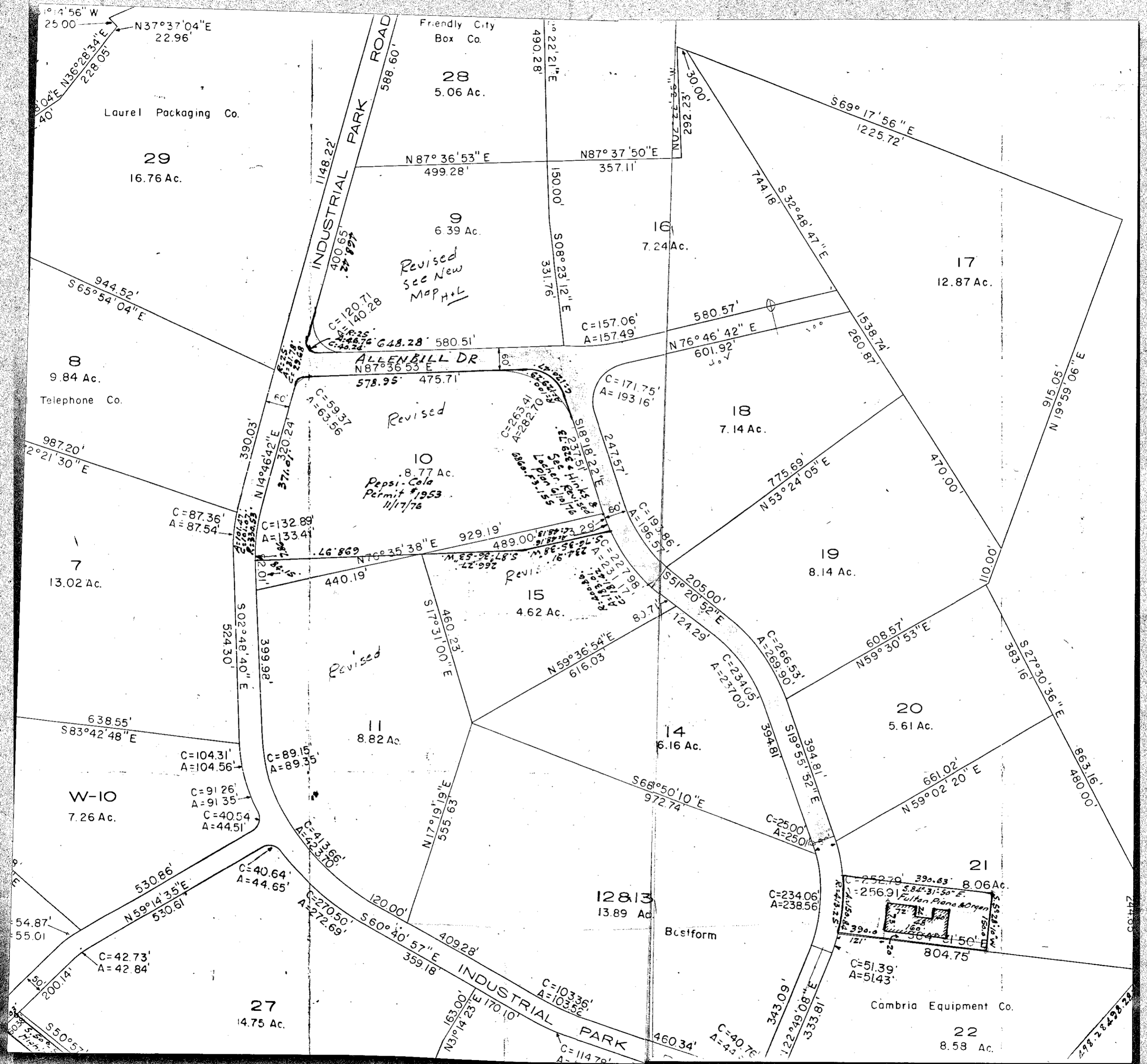
TOWNSHIP OF RICHLAND

Ray E. Mulhollen
Secretary

By

Walter J. Mattoon
Chairman

FILED
CLERK OF COURTS
CAMBRIA CO. PA.
JUN 16 12 33 PM '82



Laurel Packaging Co.

29
16.76 Ac.

Friendly City
Box Co.

28
5.06 Ac.

9
6.39 Ac.

Revised
see New
Map H+L

16
7.24 Ac.

17
12.87 Ac.

8
9.84 Ac.
Telephone Co.

ALLENBILL DR
N87°36'53"E

Revised

10
8.77 Ac.
Pepsi-Cola
Permit #1953
11/17/76

18
7.14 Ac.

7
13.02 Ac.

15
4.62 Ac.

19
8.14 Ac.

Revised

11
8.82 Ac.

14
6.16 Ac.

20
5.61 Ac.

W-10
7.26 Ac.

12813
13.89 Ac.
Busiform

21
8.06 Ac.
Fulton Piano & Organ

27
14.75 Ac.

Cambria Equipment Co.

22
8.58 Ac.