

Rd Bk# 1 Dec 1974

ORDINANCE NO. 21

AN ORDINANCE ACCEPTING PINE STREET, BEECH STREET, OAK STREET, HEMLOCK STREET AND A PORTION OF LUTHER STREET AS PUBLIC STREETS IN ADAMS TOWNSHIP, CAMBRIA COUNTY, PENNSYLVANIA, AND, FURTHER, AMENDING ADAMS TOWNSHIP ORDINANCE NO. 16.

BE IT ORDAINED, and it is hereby ordained by the Board of Supervisors of the Township of Adams, Cambria County, Pennsylvania that the following streets, located in the Luther Flying Service Company Subdivision near the Village of Salix, by and the same are hereby accepted as public streets by the Township of Adams: Pine Street from its intersection with Township Road No. 316 to the southerly side of Luther Street (centerline length 193.47 ft.); Beech Street from its intersection with Luther Street to its intersection with Hemlock Street (centerline length 1,178.45 ft.); Hemlock Street from its intersection with Beech Street to the westerly side of Oak Street (centerline length 400 ft.); Oak Street from the northerly side of Luther Street to lands of G. H. Miller Estate (centerline length 1,417.80 ft.); Luther Street from its intersection with Beech Street to the easterly side of Spruce Street (centerline length 912.80 ft.). A map showing the streets to be accepted as well as the complete descriptions thereof, as prepared by John H. Weld, P.E. are made a part hereof.

BE IT FURTHER ORDAINED that any part of Ordinance No. 16, adopted August 16, 1971 inconsistent herewith is hereby repealed.

BE IT FURTHER ORDAINED that a copy of this ordinance be filed in the Office of the Clerk of the Court of Quarter Sessions of Cambria County, Pennsylvania. This ordinance shall become effective five (5) days after its adoption by the Township Supervisors.

ENACTED this 16th day of September, 1974.

TOWNSHIP OF ADAMS

ATTEST:

Peter R. Skoner  
Secretary

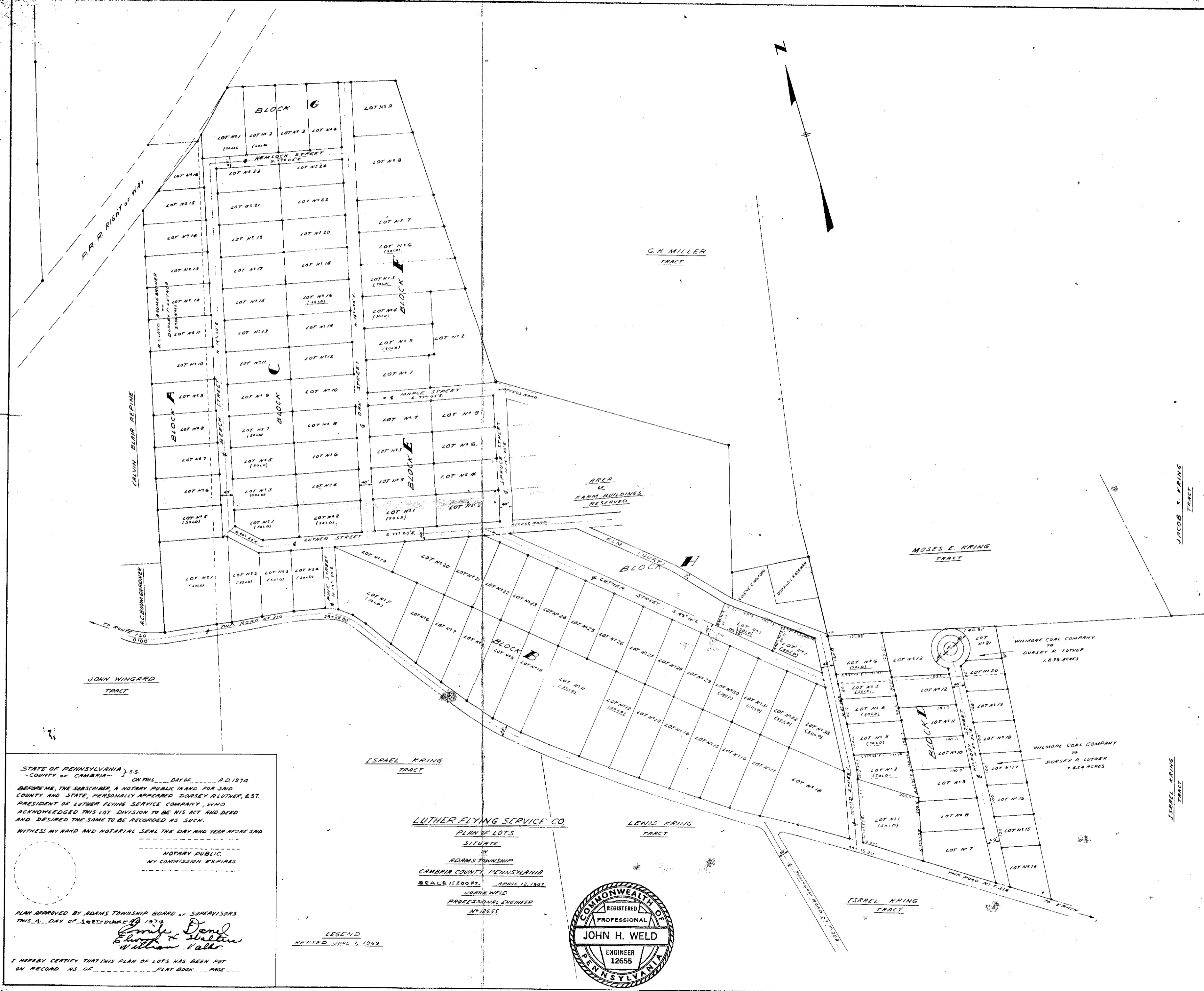
By Emile Daniel  
Edward H. Walters  
William Valbo  
Supervisors

I hereby certify that the above is a true and correct copy of an ordinance adopted at the Adams Township Supervisors meeting on Monday, September 16, 1974.

Peter R. Skoner

FILED  
CLERK OF COURTS  
CAMBRIA CO. PA.  
SEP 27 12 52 PM '74  
STEPHEN D. SOLACKOVICH  
CLERK OF COURTS

ADAMS TOWNSHIP ORDINANCE NO. 21
LAW OFFICES GILBERT E. CAROFF, Esq. WALLACE BUILDING 406-410 MAIN STREET JOHNSTOWN, PENNSYLVANIA 15901



STATE OF PENNSYLVANIA ) S.S.  
 -COUNTY OF CAMBRIA- ) ON THIS DAY OF \_\_\_\_\_ A.D. 1974  
 BEFORE ME, THE SUBSCRIBER, A NOTARY PUBLIC IN AND FOR SAID COUNTY AND STATE, PERSONALLY APPEARED DORSEY R. LUTHER, EST. PRESIDENT OF LUTHER FLYING SERVICE COMPANY, WHO ACKNOWLEDGED THIS LOT DIVISION TO BE HIS ACT AND DEED AND DESIRED THE SAME TO BE RECORDED AS SUCH.  
 WITNESS MY HAND AND NOTARIAL SEAL THE DAY AND YEAR AFORESAID

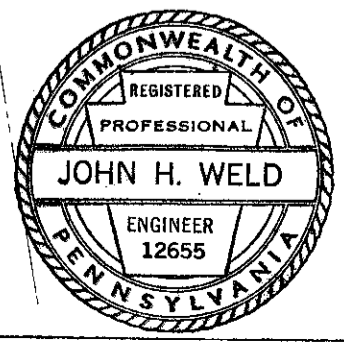
NOTARY PUBLIC  
 MY COMMISSION EXPIRES \_\_\_\_\_

PLAN APPROVED BY ADAMS TOWNSHIP BOARD OF SUPERVISORS  
 THIS 4 DAY OF SEPTEMBER 1974

*Emile Daniel  
 Edward H. Stalter  
 William V. Lahr*

I HEREBY CERTIFY THAT THIS PLAN OF LOTS HAS BEEN PUT ON RECORD AS OF \_\_\_\_\_ PLAT BOOK \_\_\_\_\_ PAGE \_\_\_\_\_

LUTHER FLYING SERVICE CO.  
 PLAN OF LOTS  
 SITUATE  
 IN  
 ADAMS TOWNSHIP  
 CAMBRIA COUNTY, PENNSYLVANIA  
 SCALE: 1" = 200 FT. APRIL 12, 1967  
 JOHN H. WELD  
 PROFESSIONAL ENGINEER  
 NO. 12655



LEGEND  
 REVISED JUNE 1, 1969

STREET DESCRIPTIONS  
LUTHER FLYING SERVICE COMPANY  
SUBDIVISION  
SITUATE IN ADAMS TOWNSHIP  
CAMBRIA COUNTY, PENNSYLVANIA

<u>NAME OF STREET</u>		<u>BEARINGS</u>	<u>DESCRIPTION</u>		
			<u>LENGTHS</u>	<u>WIDTHS</u>	<u>CENTERLINE LENGTH</u>
BEECH STREET	1-2	N. 14°-20' E.	1,193.65 FT.		1,178.45 FT.
	2-3	S. 77°-05' E.		40.00 FT.	
	3-4	S. 14°-20' W.	1,163.16 FT.		
	4-1	S. 67°-01' W.		50.30 FT.	
HEMLOCK STREET	1-2	N. 14°-20' E.		40.00 FT.	400 FT.
	2-3	S. 77°-05' E.	400.00 FT.		
	3-4	S. 14°-20' W.		40.00 FT.	
	4-1	N. 77°-05' W.	400.00 FT.		
OAK STREET	1-2	N. 14°-20' E.	1,418.63 FT.		1,417.80 FT.
	2-3	S. 74°-42' E.		40.03 FT.	
	3-4	S. 14°-20' E.	1,417.97 FT.		
	4-1	N. 77°-05' W.		40.00 FT.	
PINE STREET	1-2	N. 14°-20' E.	189.50 FT.		193.47 FT.
	2-3	S. 77°-05' E.		40.00 FT.	
	3-4	S. 14°-20' W.	197.45 FT.		
	4-1	N. 65°-46' W.		40.50 FT.	
LUTHER STREET	1-2	N. 67°-01' E.		50.30 FT.	912.80 FT.
	2-3	S. 45°-23' E.	96.93 FT.		
	3-4	S. 77°-05' E.	796.27 FT.		
	4-5	S. 12°-55' W.		40.00 FT.	
	5-6	N. 77°-05' W.	808.31 FT.		
	6-7	N. 45°-23' W.	114.87 FT.		
	7-1	N. 77°-05' W.	14.60 FT.		

JOHN H. WELD, P.E.  
CONSULTING ENGINEER  
SOUTH FORK, PA.

