

R.D. 2, Dec 1968

Portage Twp. Ordinance

RALPH J. TALARIGO
ATTORNEY-AT-LAW
814 MAIN STREET
PORTAGE, PENNSYLVANIA

FILED
CLERK OF COURTS
SEP 30 11 56 AM '68
STEPHEN D. BLACKOVICH
CLERK OF COURTS

ORDINANCE NO. _____

AN ORDINANCE OF THE TOWNSHIP OF PORTAGE, ACCEPTING AND TAKING OVER EXISTING ROADS IN SAID TOWNSHIP, AND PROVIDING FOR THE MAINTENANCE AND REPAIR OF SAID ROADS BY THE TOWNSHIP SUPERVISORS.

BE IT ENACTED AND ORDAINED, by the Supervisors of the Township of Portage, County of Cambria and State of Pennsylvania, as follows:

1. Portage Township Supervisors hereby accept and take over the following described existing roads located in the Township of Portage, County of Cambria and State of Pennsylvania.

2. That the said existing roads are located entirely in the Township of Portage, Pennsylvania.

3. That said roads will be used for public use and travel and will be maintained and kept in repair by Portage Township Supervisors.

4. That the following described roads are hereby added to and shall become a part of the public road system of the Township of Portage:

(1) BEGINNING at a point on LR 11019, 22.0 feet North of Highway Station 4/75; thence in a Northeasterly direction a distance of 262 feet with a width of 50 feet, known as Calvin Avenue in said Portage Township.

(2) BEGINNING at a point on LR 11019, 196.85 feet South of Highway Station 4/50; thence North 77 degrees 52 minutes East a distance of 904 feet to center line of Township Road No. 355 with a width of 15 feet, said street is located in Springhill, Portage Township, Pennsylvania.

(3) BEGINNING at a point on LR 11019; thence North of Highway Station 4/50, 233 feet; thence South 78 degrees 00 minutes West, a distance of 836.7 feet, with a width of 15 feet, located in Springhill, Portage Township, Pennsylvania.

(4) BEGINNING at a point on Route 53 in the Village of Jamestown, Portage Township, Pennsylvania, 150 feet from Highway Station 2/76; thence in a Northeasterly direction a distance of 970 feet with a width of 30 feet.

(5) BEGINNING at a point on LR 11071; thence 238 feet West of Highway Station 1/25; thence in a Southwesterly direction 291 feet with a width of 15 feet, located in the Village of Benscreek, Portage Township, Pennsylvania.

(6) BEGINNING at a point on LR 11071, 261.0 feet East of Highway Station 1/25; thence in a Southwesterly direction a distance of 180 feet, having a width of 15 feet, known as Green Street in the Village of Benscreek, Portage Township, Pennsylvania.

(7) BEGINNING at a point 249.0 feet East from the intersection of Green Street and a Township Road; thence in an Easterly direction, a distance of 483 feet with a width of 15 feet, located in the Village of Benscreek, Portage Township, Pennsylvania.

(8) BEGINNING at a point on LR 11024, 185 feet South of Highway Station 1/45; thence South 30 degrees 00 minutes 30 seconds West 53 feet to a point; thence South 50 degrees 50 minutes 30 seconds West 119 feet to a point; thence South 66 degrees 40 minutes 30 seconds West 40.5 feet; thence South 84 degrees 45 minutes West 411 feet; thence South 59 degrees 27 minutes West 97 feet; having a width of 15 feet, located in the Village of Fiddlers Green, Portage Township, Pennsylvania.

(9) BEGINNING at a point on LR 11071, 59 feet East of Highway Station 1/35; thence South 31 degrees 32 minutes East 126.3 feet to a point; thence South 22 degrees 45 minutes East 96.5 feet to a point; thence South 47 degrees 08 minutes East 47 feet to a point; thence South 74 degrees 41 minutes 30 seconds East 268 feet to a point; thence South 74 degrees 40 minutes 30 seconds East 259 feet to a point; thence North 62 degrees 41 minutes 30 seconds East 30.5 feet to a point; thence North 19 degrees 19 minutes East 35 feet to a point; thence North 6 degrees 50 minutes West 86 feet, having a width of 33 feet and located in the Village of Benscreek, Portage Township, Pennsylvania.

(10) BEGINNING at a point on LR 11027, 233 feet North of Highway Station 0/00; thence North 79 degrees 34 minutes West a distance of 22.6 feet to a point; thence South 41 degrees 00 minutes West 40.3 feet to a point; thence South 20 degrees 32 minutes West 208.6 feet; thence North 74 degrees 38 minutes West 389.5 feet; thence North 26 degrees 12 minutes East 394.2 feet; thence South 62 degrees 53 minutes East 63 feet; thence South 26 degrees 56 minutes West 411 feet, having a width of 15 feet and located in the Village of Oil City, Portage Township, Pennsylvania.

5. That on taking effect of this Ordinance, a certified copy, will be filed with the Clerk of Courts of Cambria County, Pennsylvania, along with maps prepared by the Portage Township Engineer.

6. That this Ordinance shall take effect upon complying with Section 5 above mentioned.

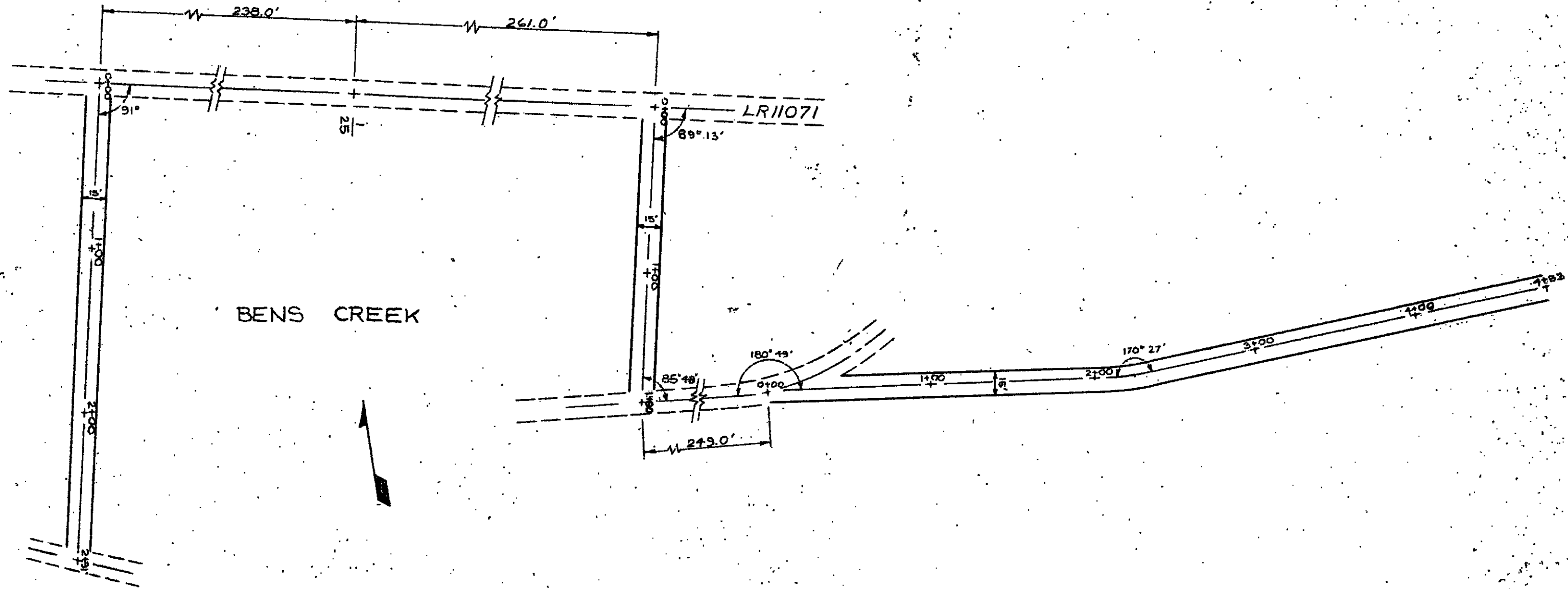
ORDAINED AND ENACTED, this 27 day of September, 1968.

ATTEST:

PORTAGE TOWNSHIP SUPERVISORS

Charles Salzigian
Secretary

BY: Joseph A. Kopinski
Chairman

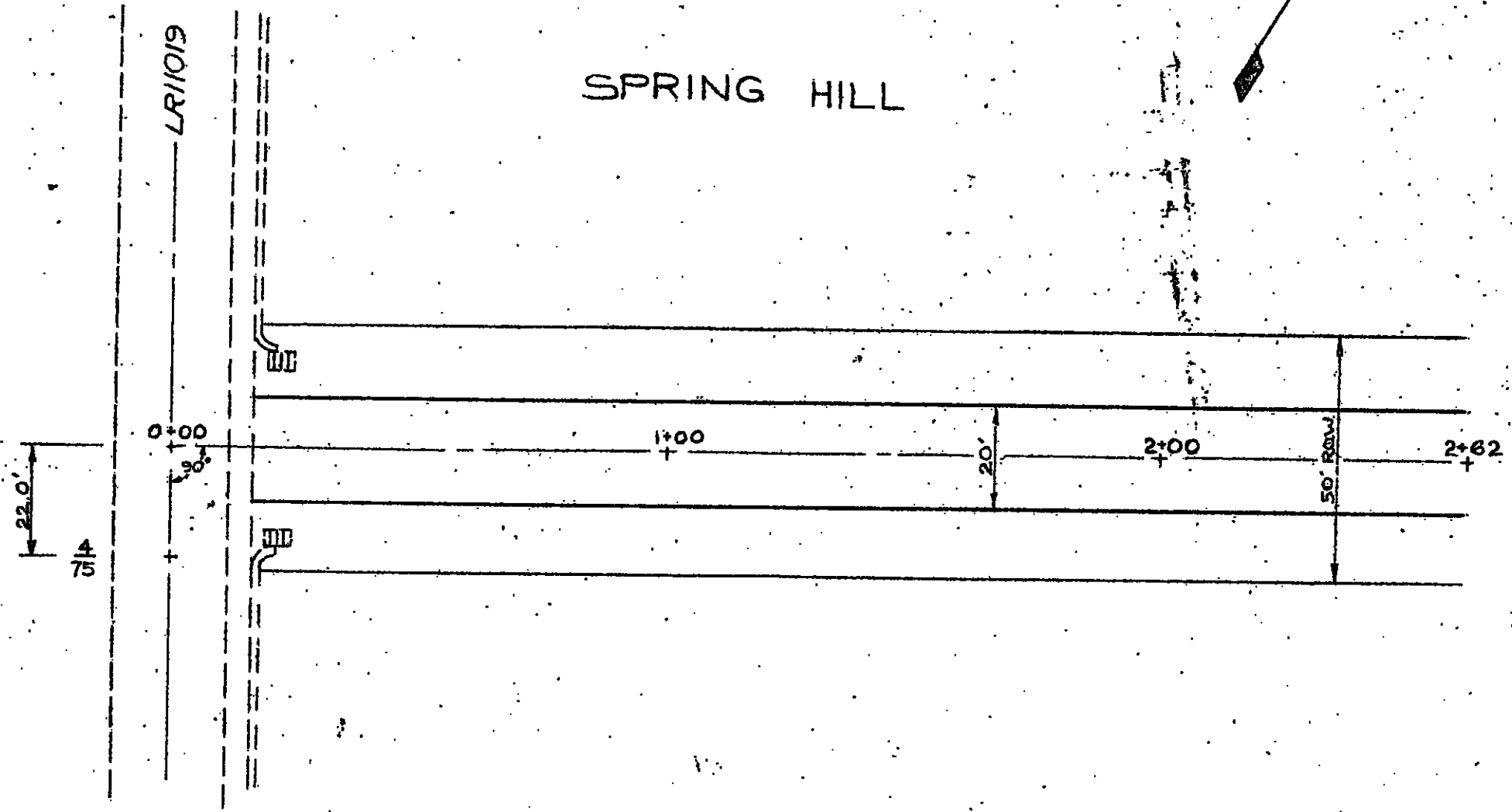


Approved this 27th day
 of Sept. 1968.
 By Twp. Supervisors

Charles Salogian
 Joseph A. Repusky

PROPOSED ROADS PORTAGE TOWNSHIP CAMBRIA COUNTY, PA.	
SCALE 1"=60'	SEPT 16 1968
W. L. FEDORKO CONSULTING ENGINEERS PORTAGE, PENNA.	SHEET 2 OF

SPRING HILL

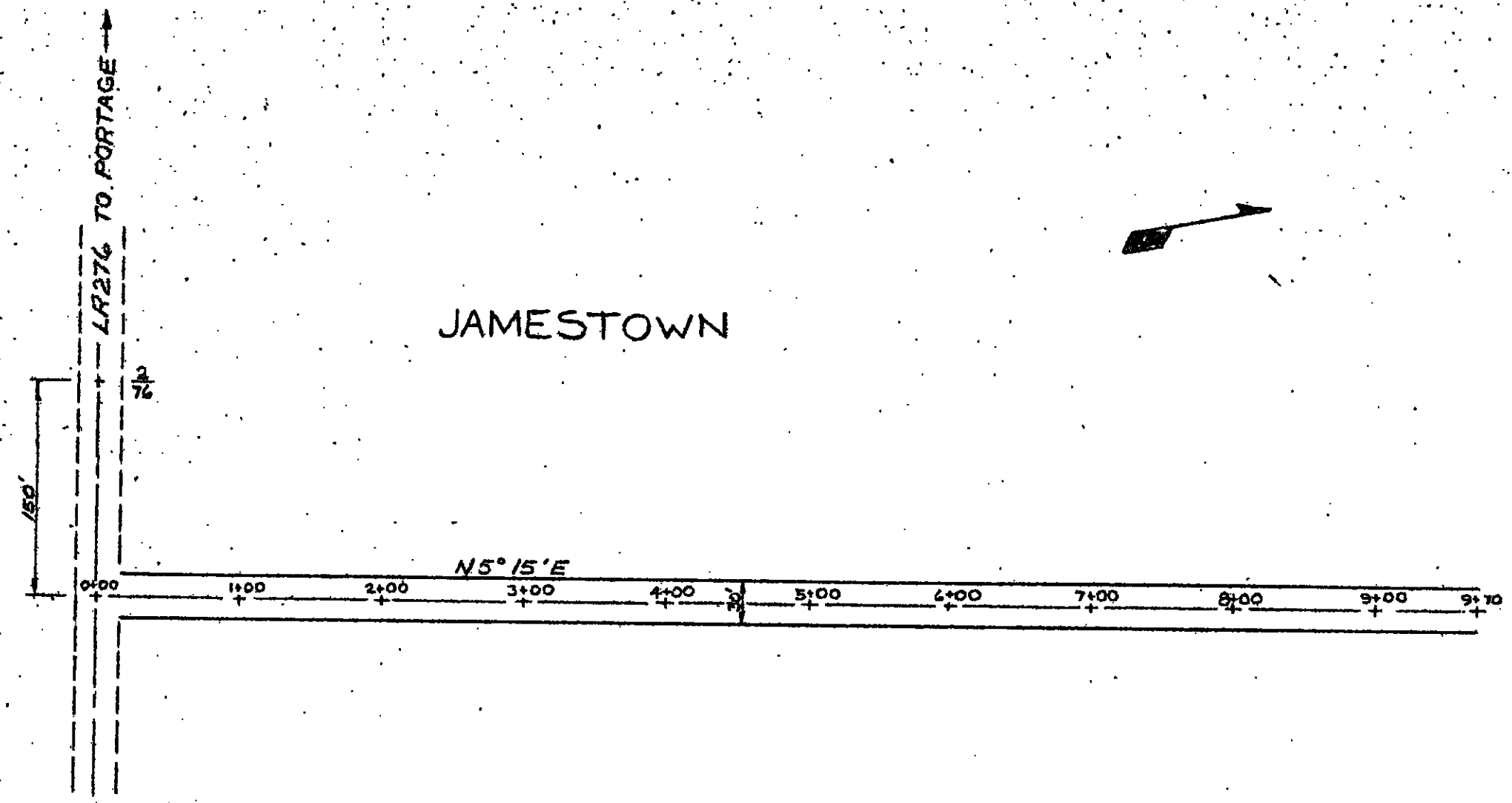


Approved this 27th day
of Sept. 1968:

By Twp. Supervisors:

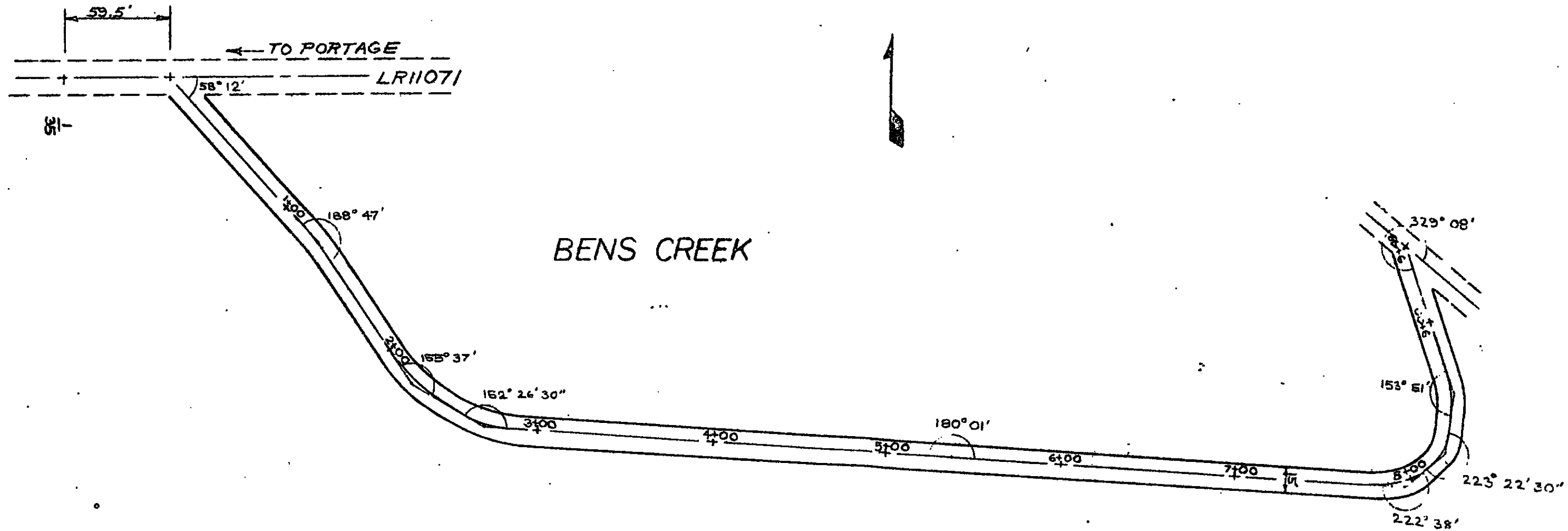
Charles Seligman
Joseph A. Kopusky

PROPOSED ROADS PORTAGE TOWNSHIP CAMBRIA COUNTY, PA.	
SCALE 1"=30'	SEPT 16, 1968
W. L. FEDORKO CONSULTING ENGINEERS PORTAGE, PENNA.	SHEET 3 OF



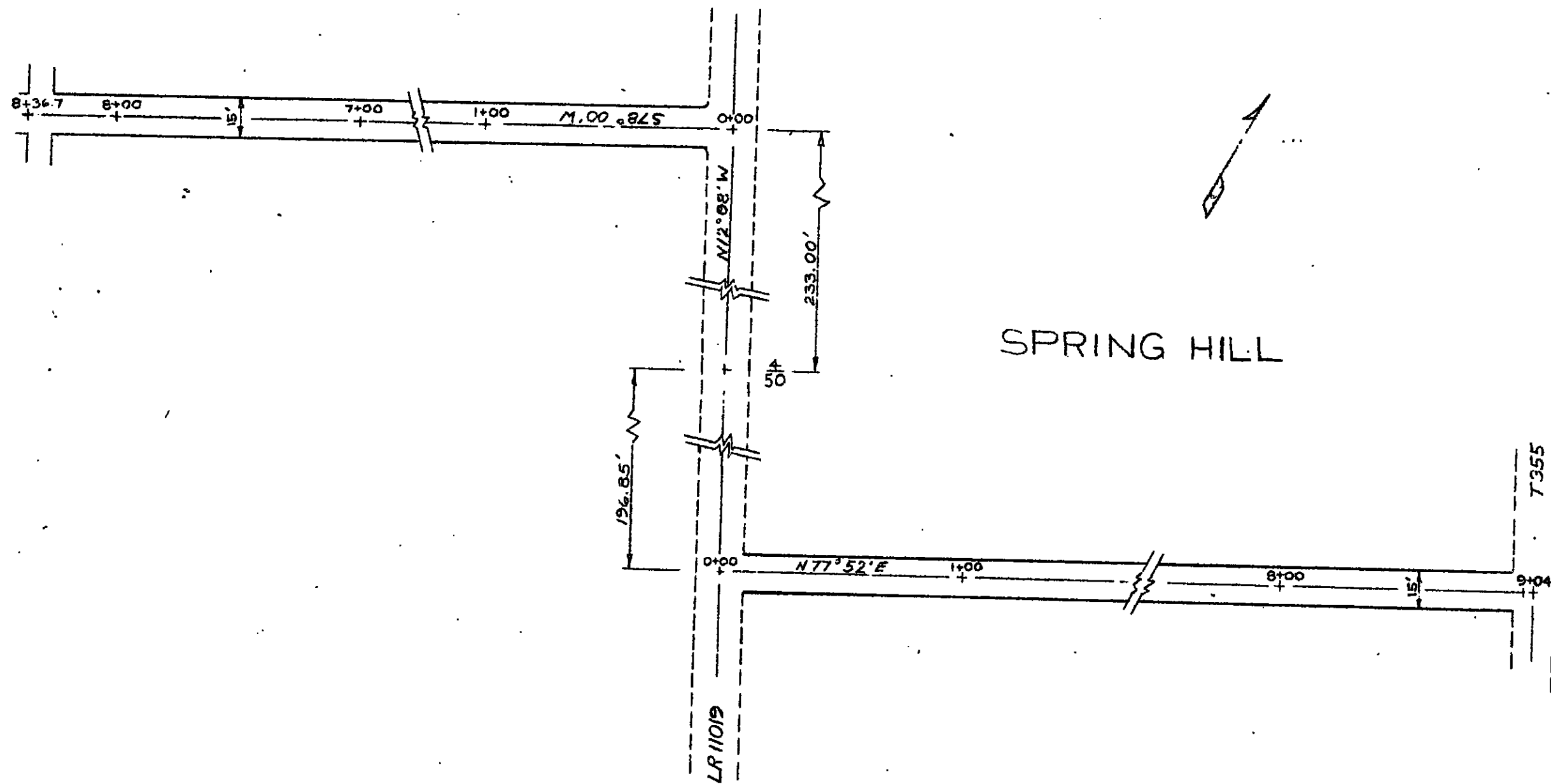
Approved this 27th day
 of Sept. 1968.
 BY Twp. Supervisors:
 Charles Salogren
 Joseph A. Kopych

PROPOSED ROADS PORTAGE TOWNSHIP CAMBRIA COUNTY, PA.	
SCALE 1"=100'	SEPT 16, 1968
W. L. FEDORKO CONSULTING ENGINEERS PORTAGE, PENNA.	SHEET 5 OF



APPROVED this 27th day
 of Sept. 1968.
 BY Twp. Supervisors:
 Charles Salzman
 Joseph A. Koprucki

PROPOSED ROADS PORTAGE TOWNSHIP CAMBRIA COUNTY, PA	
SCALE 1"=60'	SEPT 16 1968
W. L. FEDORKO CONSULTING ENGINEERS PORTAGE, PENNA.	SHEET 7 OF



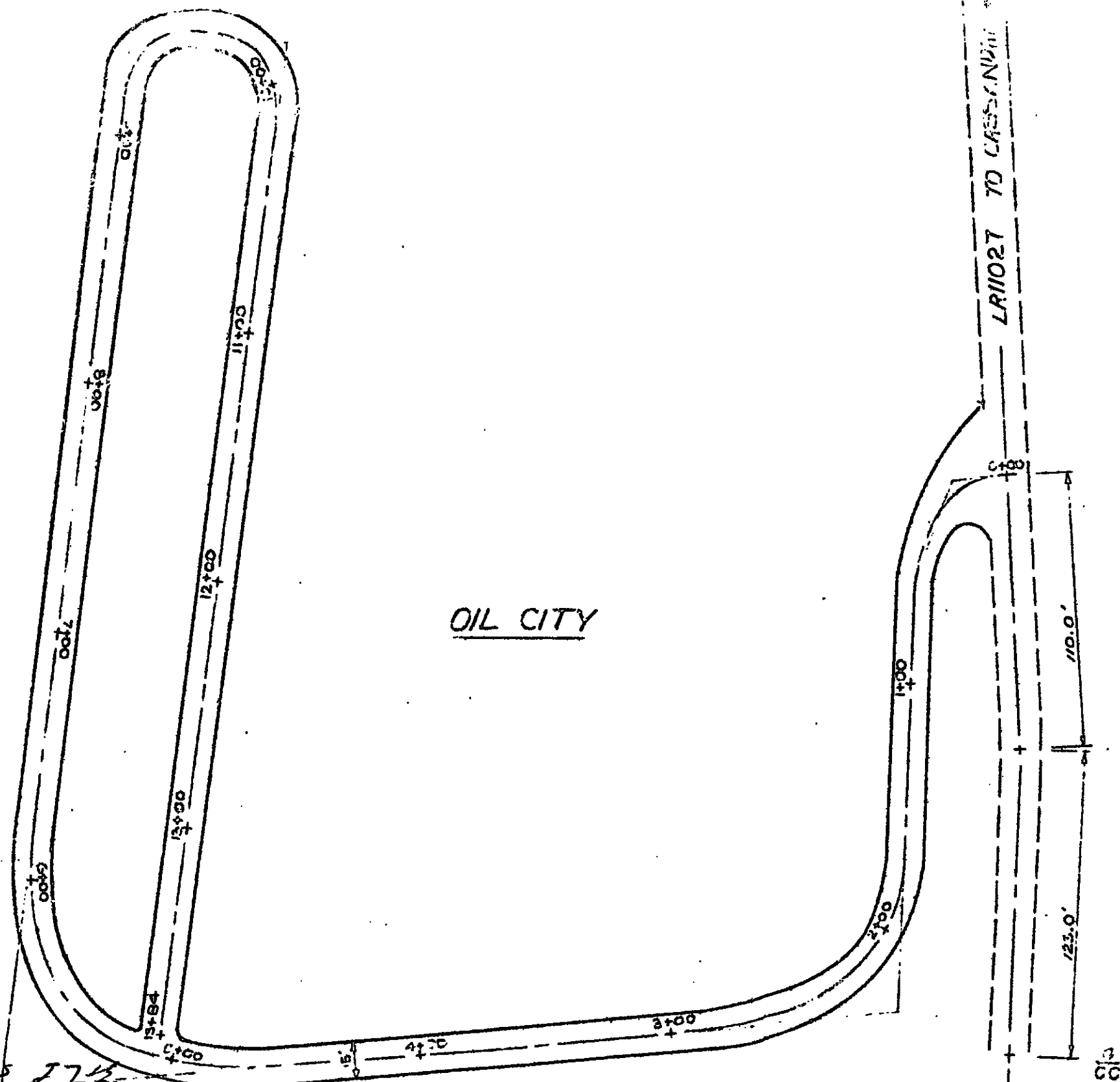
Approved this 27th Day of
Sept. - 1968.

By Twp. Supervisors:

Charles Salzman
Joseph A. Kopynsky

PROPOSED ROADS PORTAGE TOWNSHIP CAMERIA COUNTY, PA.	
SCALE 1"=50'	SEPT 16, 1968
W.L. FEDORKO CONSULTING ENGINEERS PORTAGE, PENNIA.	
SHEET	1
	OF

Roll # 2 Dec. 1968
Nat Metaphimed



OIL CITY

L11027 TO CASSANDRA



APPROVED this 27th
 DAY of Sept. 1963
 BY Town Supervisors:

Charles Salogren
 Joseph A. Kuchny

PROPOSED ROADS PORTAGE TOWNSHIP CAMBRIA COUNTY, PA.	
SCALE 1"=50'	SEPT 12 1963
W. L. FEDORKO CONSULTING ENGINEERS PORTAGE, PENNA.	
SHEET	4
OF	4