

No. *R.D. 5*, March 1965

In the Court of Quarter
Sessions of Cambria County,
Pennsylvania

IN THE MATTER OF THE TOWNSHIP
OF UPPER YODER, CAMBRIA
COUNTY

ACCEPTANCE OF WESTVIEW
DRIVE

MARGOLIS, COPPERSMITH & SHAHADE
ATTORNEYS-AT-LAW
FIFTH FLOOR CARNEGIE BUILDING
JOHNSTOWN, PENNSYLVANIA 15901

FILED
CLERK OF COURTS
CAMBRIA CO. PA.

FEB 15 2 11 PM '65

STEPHEN D. OBLACKOVICH
CLERK OF COURTS

AN ORDINANCE FOR THE ACCEPTANCE, OPENING
AND LAYING OUT OF WESTVIEW DRIVE

BE IT ORDAINED, and it is hereby ordained that the Township of Upper Yoder, Cambria County, Pennsylvania, hereby accepts, opens and lays out as a public road in said Township Westview Drive, being 40 feet in width, the centerline of said Westview Drive being more particularly described as follows:

BEGINNING at a point at the intersection of the Westerly line of Shenklevue Drive, the Southerly line of an existing 20 foot alley as shown on the Shenkel Estate Plan of Lots and the Northerly corner of land now or formerly of George M. Spence, et ux.; thence South 54° 13' West a distance of 297.41 feet to a point;

a map, draft and survey showing said Westview Drive and also the centerline grade established thereon is attached hereto and made part of this Ordinance.

ORDAINED AND ENACTED this 11th day of February 1965.

SUPERVISORS OF THE TOWNSHIP OF
UPPER YODER

By Edward F. DeFuria
President

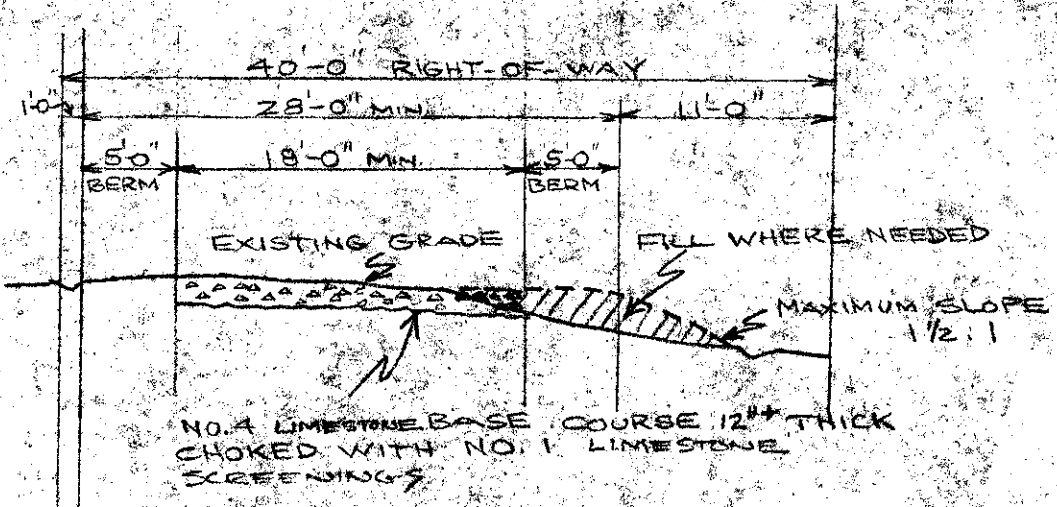
ATTEST:

Robert W. Hunt
Secretary

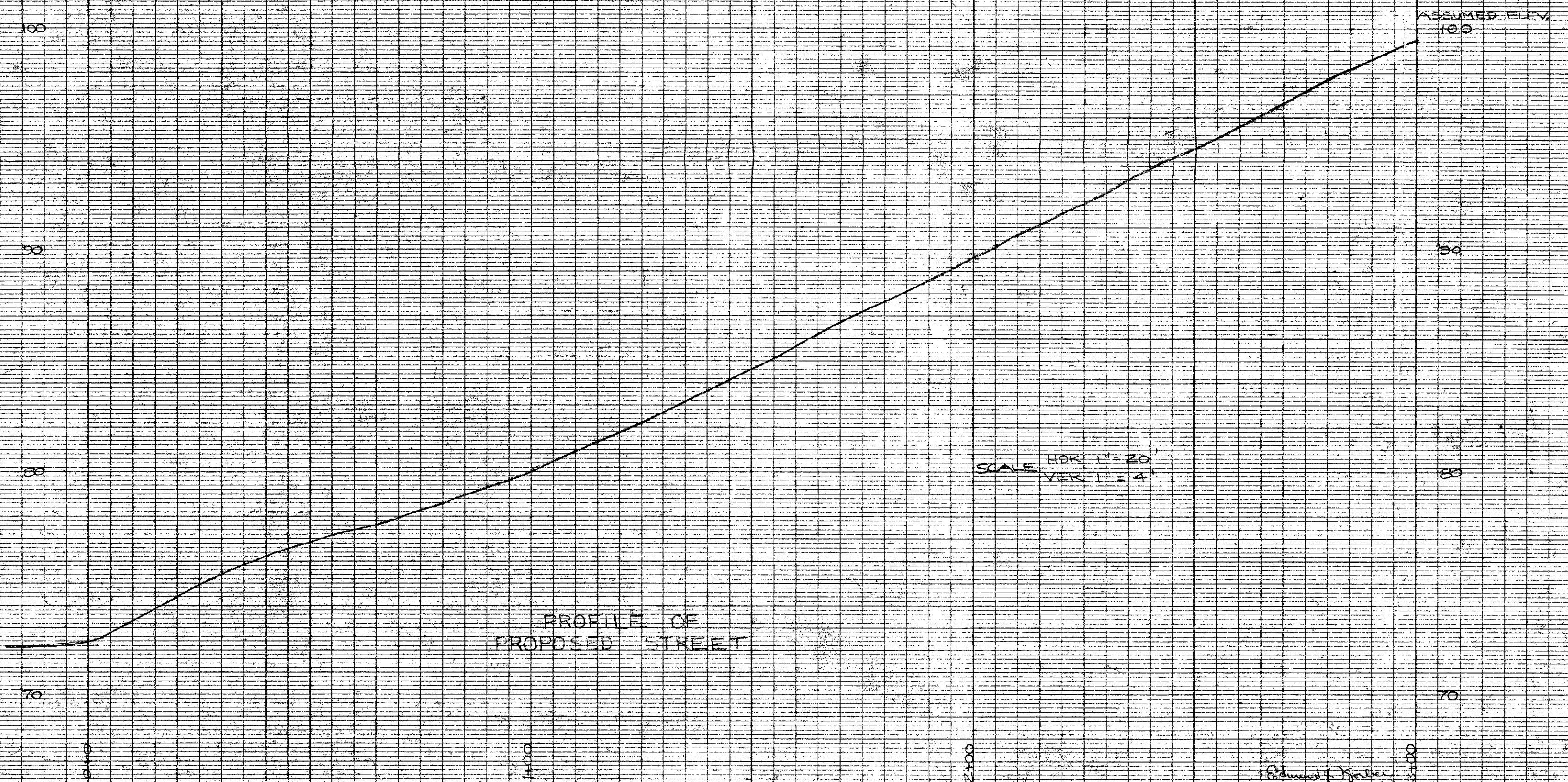
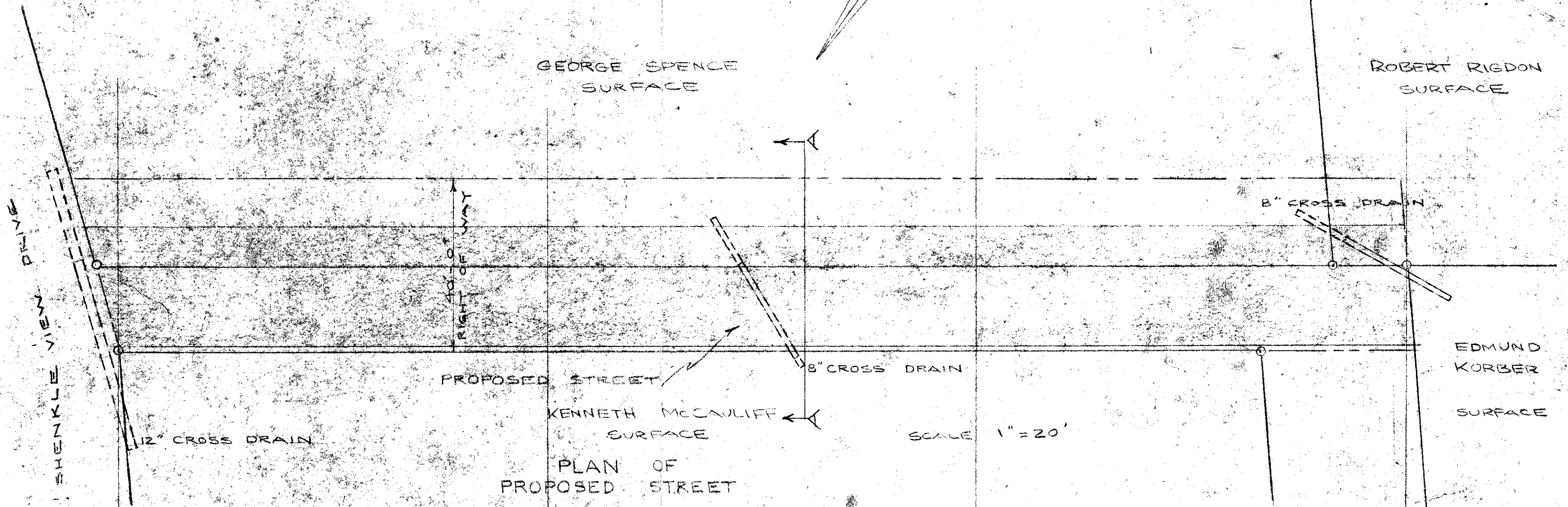
CERTIFICATION

I hereby certify that the foregoing is a true and correct copy of the Ordinance adopted by the Supervisors of Upper Yoder Township, Cambria County, on the 11th day of February 1965.

Robert W. Hunt
Secretary, Supervisors of Upper
Township



TYPICAL SECTION A-A
 SCALE 1"=10'



Edmund Korber