

R. D. 2 Sept. 1961

IN THE COURT OF QUARTER SESSIONS
OF CAMBRIA COUNTY

Copy of Ordinance adopted by
the Supervisors of Allegheny
Township relative to the vaca-
tion of a portion of the Town-
ship Road and the opening of a
new road to Franciscan Fathers--
Our Lady of Loretto Seminary,
with map.

Filed - 9-5-61

LAW OFFICES

MYERS, TAYLOR & PEDUZZI

213 S. CENTER STREET - OPPOSITE COURT HOUSE

EBENSBURG, PENNSYLVANIA

O R D I N A N C E

BE IT ENACTED AND ORDAINED BY AUTHORITY OF THE SUPERVISORS OF THE TOWNSHIP OF ALLEGHENY, AND IT IS HEREBY ENACTED AND ORDAINED:

That a portion of the public road extending from State Highway Route No. 276 between Loretto and Cresson at a corner of land of Franciscan Fathers-- Our Lady of Loretto Seminary and corner of land of Province of the Most Sacred Heart of Jesus, Third Order Regular of Saint Francis of Penance; South 50° West 80 feet, South 43° 15' West 250 feet, North 82° 45' West 67 feet, North 69° West 306 feet and South 17° 20' East 300 feet, be vacated, and that there be laid out and opened as a public highway to replace the portion of the roadway herein vacated, a road 40 feet in width, beginning at a point, corner of land of Henry Callan, Franciscan Fathers--Our Lady of Loretto Seminary, and Province of the Most Sacred Heart of Jesus, Third Order Regular of Saint Francis of Penance and extending North 89° 20' East 1050 feet to a point and South 41° 15' West 100 feet to the State Highway above mentioned. A map showing the portion of the road to be vacated and the portion of the road to be supplied is on file and may be examined at the Office of the Clerk of Courts of Cambria County.

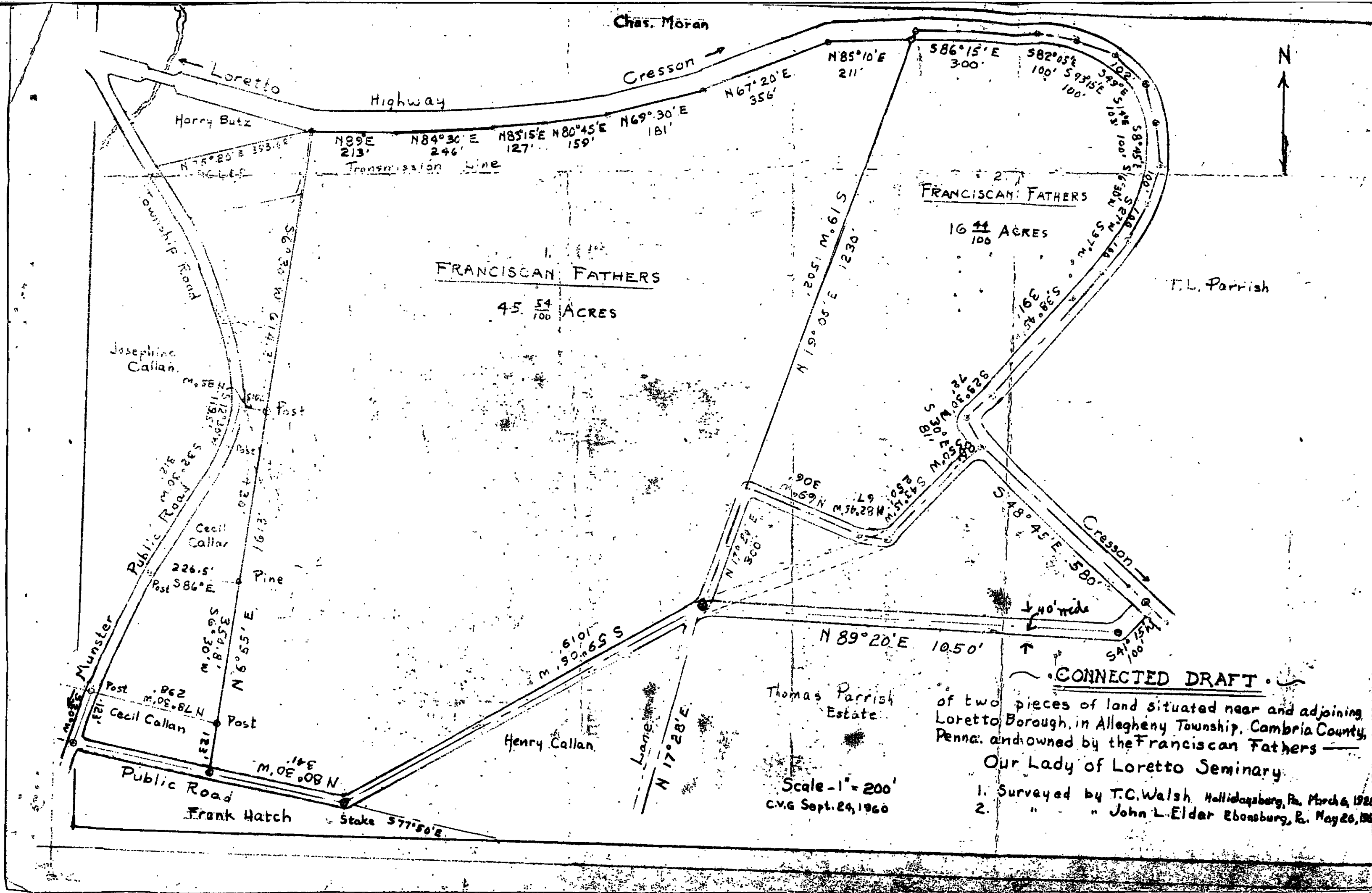
ENACTED AND ORDAINED this 4th day of November, 1960.

SUPERVISORS OF ALLEGHENY TOWNSHIP

By- *Gosling, Trepler*
Chairman of the Board of
Supervisors

ATTEST:

van → *James J. Thomas*
Secretary



N 89° E 213'

N 84° 30' E 246'

N 85° 15' E 127'

N 80° 45' E 159'

N 69° 30' E 181'

FRANCISCAN FATHERS

45.54/100 ACRES

FRANCISCAN FATHERS

16.41/100 ACRES

CONNECTED DRAFT

of two pieces of land situated near and adjoining Loretto Borough, in Allegheny Township, Cambria County, Penna. and owned by the Franciscan Fathers —

Our Lady of Loretto Seminary.

1. Surveyed by T.C. Walsh, Hollidaysburg, Pa. March 6, 1926
2. " " John L. Elder, Ebensburg, Pa. May 26, 1935