

No. R.O. 3 March 1961 ✓

Filed - Jan. 13, 1961

ELM DRIVE

✓
MCWILLIAMS, MARGOLIS & COPPERSMITH
ATTORNEYS-AT-LAW
FIFTH FLOOR CARNEGIE BUILDING
JOHNSTOWN, PENNSYLVANIA

AN ORDINANCE FOR THE ACCEPTING, OPENING
AND LAYING OUT OF ELM DRIVE

BE IT ORDAINED, and it is hereby ordained that the Township of Upper Yoder, Cambria County, Pennsylvania, hereby accepts, opens and lays out as a public road in said Township Elm Drive, being 40 feet in width, having a 24 foot roadway and an 8 foot sidewalk on each side, more particularly described as follows:

BEGINNING at the intersection of the center line of Elm Drive at Station 0+0, thence by the center line of said Elm Drive North 35° 20' West 550 feet to Station 5+50, the place of ending:

a map, draft and survey showing said Elm Drive and also the center line grade established thereon, as prepared by S. E. Dickey and Company on September 22, 1959, is attached hereto and made a part of this Ordinance.

ORDAINED and enacted this 2nd day of January 1961.

SUPERVISORS OF UPPER YODER TOWNSHIP

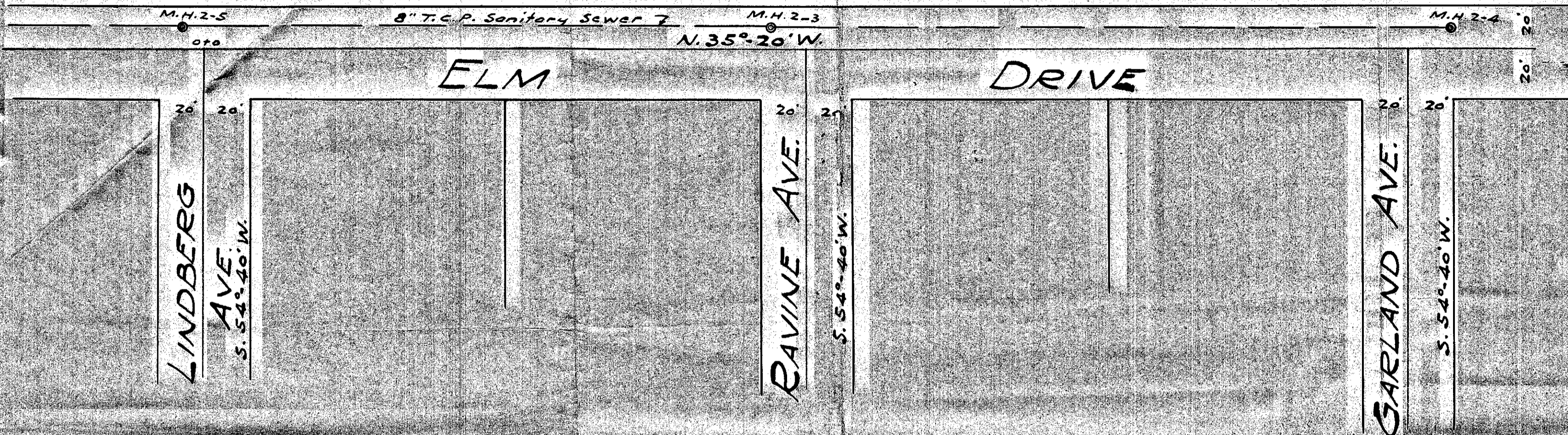
By Edward F. DeFrehn
President

ATTEST:

Thomas H. Nesbit
Secretary

I hereby certify that the foregoing is a true and correct copy of the Ordinance adopted by the Supervisors of Upper Yoder Township on January 2, 1961.

Thomas H. Nesbit
Secretary



UPPER YODER TOWNSHIP
ELM DRIVE
PLAN & PROFILE
Scale Plan 1"=40' Profile 1"=6'
S. E. Diekey & Co. Sept 22, 1939
Civil & Mining Engrs.
Johnstown, Pa.

GRADE APPROVED BY
UPPER YODER TOWNSHIP
Thomas H. Nesbit
Blair Hunt
S. A. Wilmer
Supervisors
26 day of September 1939

