

map

CERTIFIED COPY OF RESOLUTION AS ADOPTED UNANIMOUSLY
-- FULL MEMBERSHIP OF BOARD OF SUPERVISORS BEING
PRESENT AT MEETING OF SUPERVISORS OF UPPER YODER
TOWNSHIP, CAMBRIA COUNTY, PENNSYLVANIA, DULY HELD
ON THE 30th day of August, A. D. 1935.

WHEREAS, a petition was presented by all the owners in fee of all the lots abutting on Penn Street between Harshberger Street and Ogle Street; and on Ogle Street between Penn Street and Gomer Street; and on Gomer Street between Ogle Street and Sell Street; and on Bantel Street between Penn Street and intersection of the boundary lines of the City of Johnstown, all of said streets being situate in Upper Yoder Township, Cambria County, Pennsylvania; said streets having been dedicated to public use by plot known as "Plan of Elim"; said plan being duly recorded in the Recorder's office of Cambria County, Pennsylvania, in Plat Book Vol. 1, page 80; and

WHEREAS, said petitioners desire that the township shall accept the above named streets as public thoroughfares to be incorporated into the system of Township Highways; and

WHEREAS, all of the abutting owners have executed a release of and from all manner of damages, etc., as attached hereto; and

WHEREAS, it is the desire of the said supervisors to accept the above described highways as public thoroughfares;

NOW, BE IT RESOLVED, that a section of Penn Street, Ogle Street, Gomer Street and Bantel Street, described as follows: Penn Street beginning at the intersection of Harshberger Street, a public highway, thence South 18 degrees West, 607.58 feet to Ogle Street; Ogle Street beginning at the intersection of Penn Street, thence South 48 degrees 57 minutes East, 853.20 feet to Gomer Street; Gomer Street beginning at the intersection of Ogle Street, thence South 79 degrees 14 minutes West, 309.33 feet to the intersection of Sell Street, and improved public highway; Bantel Street beginning at the intersection of Penn Street, thence South 60 degrees 00 minutes East 1720.51 feet to the intersection of the boundary line of the City of Johnstown, all within the Township of Upper Yoder, be opened and accepted as public thoroughfares or highways of the said Township of Upper Yoder, Cambria County, Pennsylvania, as heretofore dedicated to public use on the Plan of Elim, said plan being duly recorded in the Recorder's office of Cambria County, Pennsylvania, in Plat Book Vol. 1, page 80, and a portion of said Plan is attached hereto, being hereby approved.

BE IT FURTHER RESOLVED, that the necessary grading and drainage shall be as determined by the Township Engineer;

BE IT FURTHER RESOLVED, that this action, with the consent of the Court of Quarter Sessions of Cambria County, be recorded in the Recorder's office of Cambria County, and then filed with the Clerk of Quarter Sessions of Cambria County;

BE IT FURTHER RESOLVED, that Penn Street between Harshberger Street and Ogle Street; and Ogle Street between Penn Street and Gomer Street; and Gomer Street between Ogle Street and Sell Street; and Bantel Street between Penn Street and intersection of the boundary lines of the City of Johnstown, as hereinabove described shall then become a part of the public highway system of the said Township of Upper Yoder, Cambria County, Pennsylvania, and that the costs of these proceedings be paid by the said Township of Upper Yoder, Cambria County, Pennsylvania.

Unanimously adopted at meeting duly held this 30th day
of August, A. D. 1935.

Scott Beam
President.

Attest:

Curt Barichart
Secretary.

I hereby certify that the above is a true and correct
copy of Resolution as introduced at a meeting of the Supervisors held on
the 30th day of August, A. D. 1935, and was on said date adopted unanimously,
full membership of the Board of Supervisors being present.

Curt Barichart - Secy

ORDER OF CONFIRMATION

AND NOW, to-wit, this 3rd day of September, A. D. 1935, the Court of Quarter Sessions of Cambria County, Pennsylvania, hereby approves and confirms those sections of Penn Street, Ogle Street, Gomer Street and Bantel Street, described as follows: Penn Street beginning at the intersection of Harshberger Street, a public highway, thence South 18 degrees West, 607.58 feet to Ogle Street; Ogle Street beginning at the intersection of Penn Street, thence South 48 degrees 57 minutes East, 853.20 feet to Gomer Street; Gomer Street beginning at the intersection of Ogle Street, thence South 79 degrees 14 minutes West, 309.33 feet to the intersection of Sell Street, and improved public highway; Bantel Street beginning at the intersection of Penn Street, thence South 60 degrees 00 minutes East 1720.51 feet to the intersection of the boundary line of the City of Johnstown, all within the Township of Upper Yoder, as heretofore dedicated to public use on the Plan of Elim, said plan being duly recorded in the Recorder's office of Cambria County, Pennsylvania, in Plat Book Vol. 1, page 80, and ORDERS AND DIRECTS that they be entered of record, and that henceforth they shall be taken, deeded and allowed to be lawful public streets or highways; and the Court further directs that the said streets shall be opened agreeable to the courses and distances aforesaid, of which the supervisors of the highways of the township through which the said streets pass are to take notice and govern themselves accordingly. The costs of these proceedings to be paid by the Township of Upper Yoder, Cambria County, Pennsylvania.

BY THE COURT.

Charles B. Gung

TO THE SUPERVISORS OF UPPER YODER TOWNSHIP
CAMBRIA COUNTY, PENNSYLVANIA.

Petition and release of damages in re: the
opening, grading and maintaining of certain
dedicated highways in Upper Yoder Township.

We, the undersigned, your petitioners, respectively
represents:

That we are Resident or Owners of lots abutting on
Penn Street from Hershberger Road to Ogle Street, Ogle Street from
Penn Street to Gomer Street and Gomer Street from Ogle Street to
Sell Street, dedicated highways in Upper Yoder Township. That we
are very much inconvenienced on account of improper highway
facilities to travel to and from our properties.

THEREFORE, we respectively petition the Board of
Supervisors of Upper Yoder Township to enact proper resolutions
adopting and accepting the above named dedicated highways, and to
grade, drain and improve same.

IN CONSIDERATION of the accepting, opening, grading,
draining, improving and maintaining of said dedicated highways,
above referred to, we, the undersigned owners of all property
abutting thereon, do hereby release the said Township of Upper
Yoder from any damages we have sustained or may seem likely to
sustain by reason of the said accepting, opening, grading, drain-
ing, improving and maintaining of said highways above mentioned.

Witness our hands and seals this 15th day of February
A. D. 1934.

Witness:

Mr. James M. Pasper
Ed. R. Miller
Frank J. Flower
Catherine Flower
Ernest W. ...

TO THE SUPERVISORS OF UPPER YODER TOWNSHIP
CAMBRIA COUNTY, PENNSYLVANIA.

Petition and release of damages in re: the
opening, grading and maintaining of a certain
dedicated highway in Upper Yoder Township.

We, the undersigned, your petitioners, respectively
represents:

That we are Residents and Owners of lots abutting on
Bantel Street from Penn Street to Gomer Street, a dedicated high-
way in Upper Yoder Township. That we are very much inconvenienced
on account of improper highway facilities to travel to and from
our properties.

THEREFORE, we respectively petition the Board of
Supervisors of Upper Yoder Township to enact proper resolutions
adopting and accepting the above named dedicated highway, and to
grade, drain and improve same.

IN CONSIDERATION OF the accepting, opening, grading,
draining, improving and maintaining of said dedicated highway,
above referred to, we, the undersigned owners of all property
abutting thereon, do hereby release the said Township of Upper
Yoder from any damages we have sustained or may seem likely to
sustain by reason of the said accepting, opening, grading, drain-
ing, improving and maintaining of said highway above mentioned.

Witness our hands and seals this 15th day of February
A. D. 1934.

Frank G. Gobert
Edward Gobert
Katherine Gobert
Mrs Emma Bader
Mr. Schas Bader
Henry Gobert
William Gobert
Jos. Gobert
Ed. Wittmberger
Lewis Merritts
Mrs Rose Merritts
Mrs Mrs Peter Schwalb
Leonard J. Hangle

Mrs. Grace Mareschal
Frank J. Flower
Catharine Flower
Saul Mew
Mr. Margous C. Stock
Mr. Charles Stock

In the Court of Quarter Sessions
of Cambria County, Pennsylvania.
No. 5, June Sessions, 1938.

IN RE: Petition and Resolution
of Board of Supervisors of Upper
Yoder Township as to the opening
and acceptance of a section of
Penn St. between Harshberger St.
and Ogle St.; Ogle St. between
Penn St. and Gomer St.; Gomer St.
between Ogle St. and Sell St.;
Bantel St. between Penn St. and
intersection of boundary lines of
City of Johnstown, all in the
Township of Upper Yoder, Cambria
County, Pa.

ORDER OF CONFIRMATION

Filed: Sept. 3 - 1938
10:30 a.m. signed [unclear]
J.M. Jones

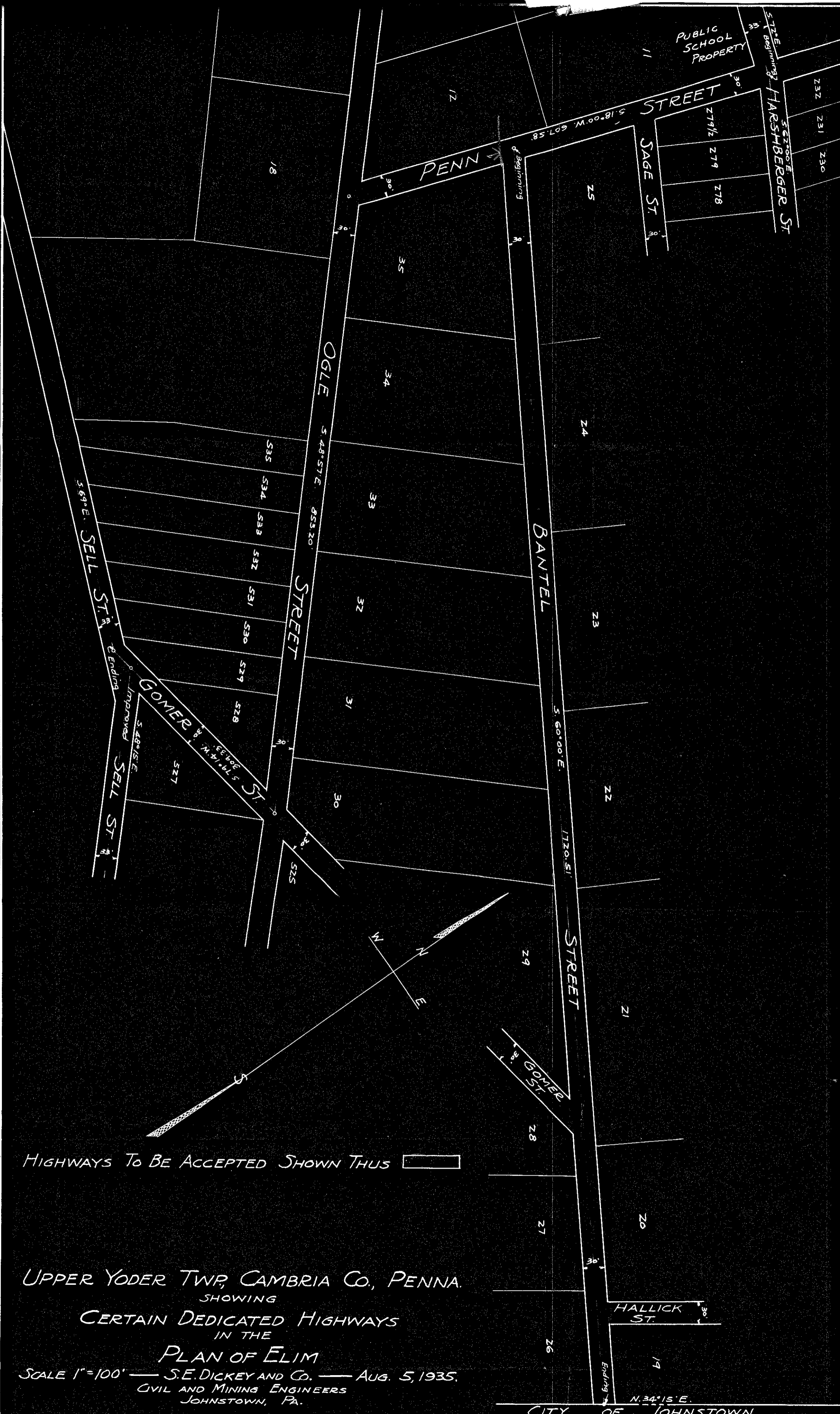
LAW OFFICES
SCANLAN & HARKINS
901-905 FIRST NATIONAL BANK BUILDING
JOHNSTOWN, PA.

Rat Microfilmed

RD#5 June 1935

Upper Yoder Twp.,

Penn, Ogle, Gomey,
& Sell Sts.



HIGHWAYS TO BE ACCEPTED SHOWN THUS

UPPER YODER TWP, CAMBRIA CO., PENNA.
 SHOWING
 CERTAIN DEDICATED HIGHWAYS
 IN THE
 PLAN OF ELIM
 SCALE 1"=100' — S.E. DICKEY AND CO. — AUG. 5, 1935.
 CIVIL AND MINING ENGINEERS
 JOHNSTOWN, PA.

1-G-258A

CITY OF JOHNSTOWN