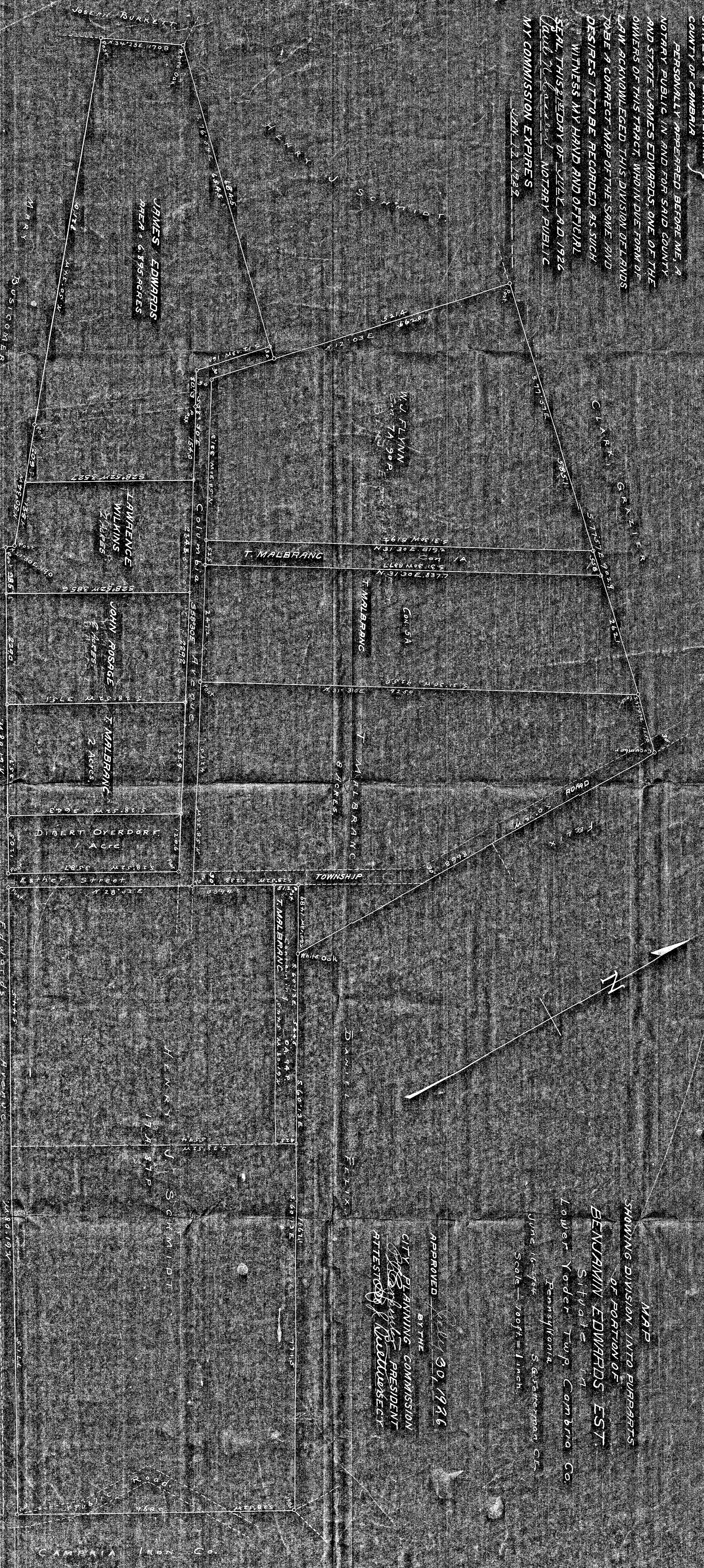


Roll # 6 June 1926.

Not Microfilmed

STATE OF PENNSYLVANIA }
 COUNTY OF CAMBRIA }
 PERSONALLY APPEARED BEFORE ME, A
 NOTARY PUBLIC IN AND FOR SAID COUNTY
 AND STATE JAMES EDWARDS, ONE OF THE
 OWNERS OF THIS TRACT, WHO IN DUE FORM OF
 LAW ACKNOWLEDGED THIS DIVISION OF LANDS
 TO BE A CORRECT MAP OF THE SAME AND
 DESIRES IT TO BE RECORDED AS SUCH
 WITNESS MY HAND AND OFFICIAL
 SEAL THIS 21ST DAY OF JULY A.D. 1926
 JAMES EDWARDS NOTARY PUBLIC
 MY COMMISSION EXPIRES
 JAN. 12, 1929



MAP
 SHOWING DIVISION INTO PARCELS
 OF PORTION OF
 BENJAMIN EDWARDS EST.
 Situate
 Lower Yoder Twp. Cambria Co.
 Pennsylvania
 June 16-1924
 S. G. Stetson, C.E.
 Scale - 100ft. = 1 inch.

APPROVED JULY 30, 1926
 BY THE
 CITY PLANNING COMMISSION
 President
 Attest
 Secretary

CAMBRIA IRON CO.

No. 6 June Sessions 1926

In the Court of Quarter Sessions
of Cambria County, Pa.

Re:
Acceptance of Columbia Avenue
in Lower Yoder Township,
Cambria County, Pa., as a
Township Road

Filed 26 August 1926

LAW OFFICES
DONALD E. CUSTER
JOHNSTOWN, PENNA.

IN THE COURT OF QUARTER SESSIONS OF CAMBRIA COUNTY, PENNA.

Re: Acceptance of :
Columbia Avenue in Lower Yoder :
Township, Cambria County, Pa., :
as a Township Road :

We, the undersigned, being the members of the Board of Supervisors of Lower Yoder Township, Cambria County, Pennsylvania, do hereby certify that on the 23rd day of August, 1926, a resolution, the following being a copy thereof, was unanimously passed at a meeting of said Board, as follows:

"On motion of W. B. Brallier, seconded by JOHN LUTHER, it was unanimously resolved, That Columbia Avenue, beginning at its intersection with the westerly side of Esther Street, and extending therefrom North 58° 30' west 1,054.3 feet, and thence north 12° 3' east 163 feet, to land of Henry J. Schmidt, with a uniform width of thirty feet, as shown on the Map of Portion of the Benjamin Edwards Estate, as made June 16, 1904, by S. G. Fetterman, which said Plan is duly recorded in the Recorder's Office of Cambria County, Pennsylvania, be and the same is hereby accepted as a public highway or thoroughfare of the Township of Lower Yoder, Cambria County, Pennsylvania".

In witness whereof, we have signed this Certificate, and placed hereto the corporate seal of the said Township of Lower Yoder this 24th day of August, 1926.

James Edwards
President of Board of Supervisors

Attest:

John Luther
Secretary, Board of Supervisors

W. B. Brallier
Supervisor

